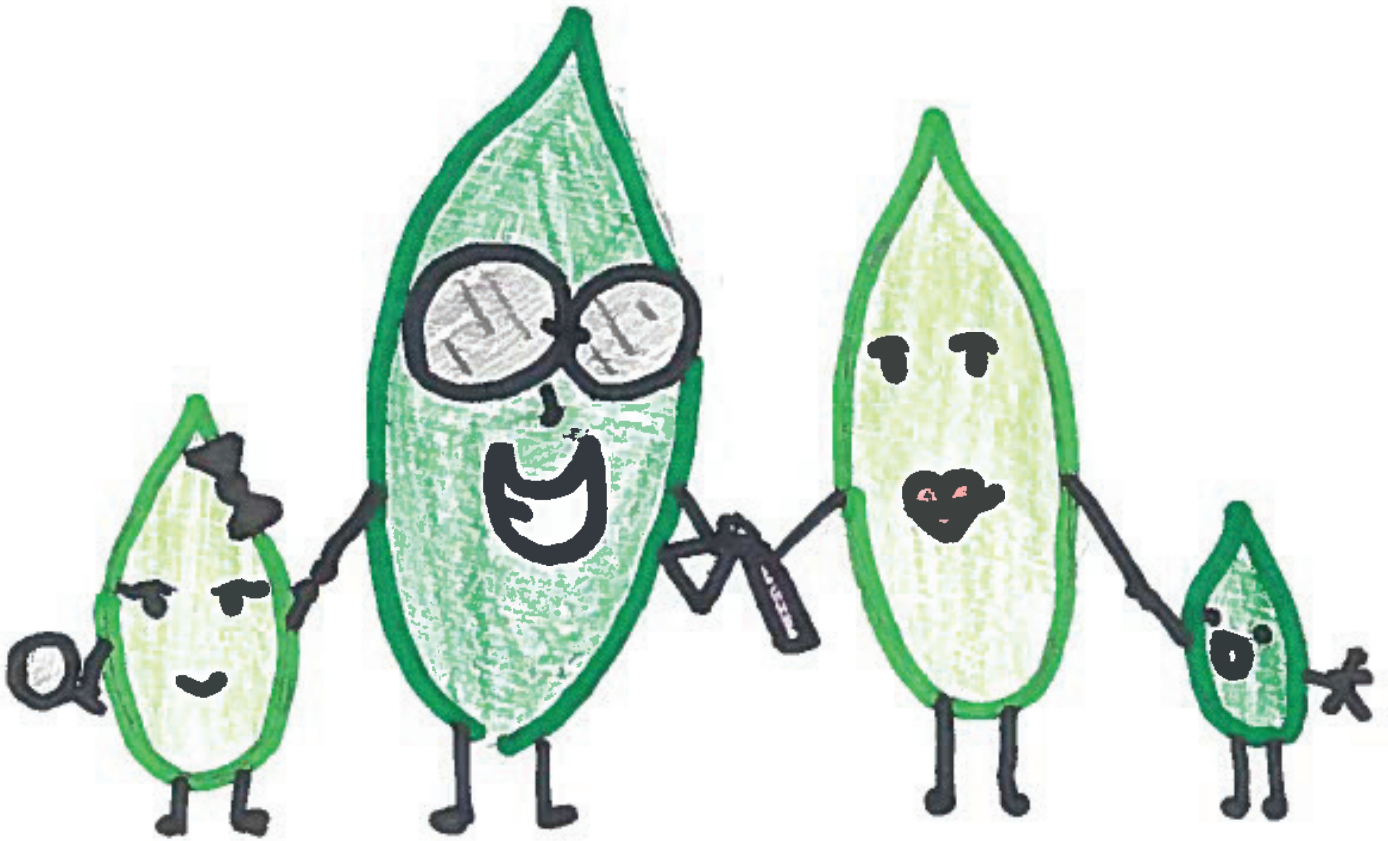


# NATURALIST QUARTERLY

AUTUMN 2016



## The Greenleafs: An Audubon Naturalist Society Family

by Kelli Holsendolph

The Audubon Naturalist Society inspires residents of the greater Washington, DC region to appreciate, understand, and protect their natural environment through outdoor experiences, education, and advocacy.

**HEADQUARTERS**

Woodend, a 40-acre wildlife sanctuary in Chevy Chase, MD

**OFFICE HOURS**

Monday-Friday 9 AM-5 PM

**STORE HOURS**

Monday-Friday 10 AM-5 PM

Saturday 9 AM-5 PM

Sunday 12-5 PM

**GROUPS HOURS**

Dawn to dusk

**ANS MEMBERSHIP**

Student \$15

Individual \$50

Family \$65

Nature Steward \$100

Audubon Advocate \$200

Sanctuary Guardian \$500

Naturalists Council \$1,000

Preservationist \$1,000+

**NATURALIST QUARTERLY** is

published four times a year by the Audubon Naturalist Society, 8940 Jones Mill Road, Chevy Chase, MD 20815. Photos, art work, and articles may not be reprinted without permission from the editor. Opinions offered do not necessarily reflect official ANS policy. Advertised products or services do not carry the endorsement of ANS.

ISSN 0888-6555

**SENIOR EDITOR**

Kelli Holsendolph

**MANAGING EDITOR**

Pam Oves

© 2016 Audubon Naturalist Society

**CONTACT INFORMATION**

ANS Headquarters/Woodend

Sanctuary

301-652-9188

FAX 301-951-7179

ANShome.org

hq@anshome.org

Audubon Sanctuary Shop

301-652-3606

Conservation, MD x22

Conservation, VA 571-278-5535

Environmental Education x16

Membership x35

Publications, advertising x23

Rentals x38

Volunteers x30

Contributions x31

Special Events x12

Rust Sanctuary 703-669-0000

E-mail unusual bird sightings to  
Voice@anshome.org

**OFFICERS**

PRESIDENT Leslie Catherwood ('17)

VICE PRESIDENT Paul D'Andrea ('17)

TREASURER Scott Fosler ('17)

SECRETARY Laura Hull ('17)

**BOARD OF DIRECTORS**

Wendy Anderson ('18), Megan Carroll

('16), Alice Ewen ('18), Allyn Finegold

('17), Mike Gravitz ('17), Jennifer Judd

Hinrichs ('17), Diane Hoffman ('16),

Jane McClintock ('18), Tim McTaggart

('18), Rebecca Turner ('18), Bonnie

VanDorn ('18)

**EXECUTIVE DIRECTOR**

Lisa Alexander

**STAFF**

**FINANCE**

Lois Taylor, Comptroller, Sherrice

Ajebon, Accountant/Benefits

Manager; Barbara Young, Accountant

**MARKETING & COMMUNICATIONS**

Kelli Holsendolph, Director; Leslie

McDermott, Communications

Manager

**AUDUBON NATURALIST SHOP**

Matt Mathias, Manager; Yoli Del

Buono, Assistant Manager

**CONSERVATION**

Eliza Cava, Director of Conservation;

Monica Billger, Virginia Conservation

Advocate;

**DEVELOPMENT** Jacky Wershale,

Director of Development; Debra

Prybyla & Laura Sebastianelli, Grant

Writers; Loree Trilling, Database

Coordinator; Allie Henn, Development

Assistant; Larry Petrovich, Assistant

**ENVIRONMENTAL EDUCATION**

Diane Lill, Director; Stephanie

Mason, Senior Naturalist; Stephanie

Bozzo, Preschool Director; Ryan Frye

& Amelia McLaughlin, Preschool

Teachers; Nora Kelly, Camp Director;

Director; Pam Oves, Office Manager;

Carol Hayes, Nature Travel Program

Assistant; Angela Kramer, EE

Scheduling Coordinator; Diane Lill,

GreenKids Director; Gregg Trilling,

GreenKids Network; Katrina Kugel,

Lauren Simpson, Deb Boger,

GreenKids Specialists

**PROPERTY MANAGEMENT**

Carlos Navas, Property Manager;

Bjorn Busk, Assistant Property

Manager

**OFFICE COORDINATOR** Carol Hayes

**RUST SANCTUARY**

Susanne Ortmann, Environmental

Education Program Manager

**VOLUNTEER COORDINATOR**

Alison Pearce

**WATER QUALITY PROGRAMS**

Cathy Wiss

**RENTALS** Beatriz Engel

# NATURALIST QUARTERLY

## ANShome.org Autumn 2016

From the Director	3
The Greenleaves: An Audubon Naturalist Society family <i>By Kelli Holsendolph</i>	4
Children and Family Programs	8
Rust Classes/Programs	11
Adult Programs	12
CALENDAR	16
Water Quality Monitoring	22
Free Birding Trips	23
Natural History Field Studies	24
Nature Travel	26
ANS News	28
Registration Info	31

**COVER A** "Green Team" summer camper draws a fictitious ANS Greenleaf Family.



ANS was recertified as one of the "finest smaller charities Greater Washington has to offer" by the Catalogue for Philanthropy.

## From the Director

### *Empty Nest and New Horizons*

As we head into fall, I relish summer memories of the time our family spent wading at the beach, watching for loons, hiking through evergreen forests and staying up late to watch the Perseid meteor showers. For me, this summer's memories are particularly special because big changes are afoot in my household.



In autumn, our full house will empty, as my youngest son heads off to his first year of college, my oldest son reinvents his career and studies in Hawaii, and my newly engaged niece settles into an apartment of her own. Not to be left out, my husband and I are taking on our own project – renovating our beloved, and very pink, family cottage in Nova Scotia. Each of these changes, full of challenge and promise, remind me of the new horizons ahead for Audubon Naturalist Society.

As much as our emptying nest tugs at my heart, I know that families must grow, spread out and change to carry on. So must our beloved Audubon Naturalist Society. In partnership with you, our loyal members, and landscape architects, designers, contractors and vendors, the ANS staff and volunteers are working hard to diversify our community, transform our sanctuary and ensure that people of all ages have the time and the place to connect with nature.

What will that growth and expansion look like in the year ahead? It's dizzying! Watch for a new web site and new welcome signs that will open doors to newcomers to ANS. Keep your eye out for the brand new ANS Nature Bus. Thanks to donor generosity, we're now proud owners of this 27-passenger bus that will help us transport underserved children to our nature sanctuaries for their first-ever experiences with forests, meadows, streams and ponds.

## LETTERS

### Stream Sentiments

Thank you for your support at last month's event [Earth Mother's Day Clean Stream Clean Up]. I am honored to be featured as a Stream Super Hero!

Tammy Shephard, Rockville, MD

It was nice working together and helping the kids engage in stream monitoring.

Veronica Tangiri, Volunteer Coordinator, South Run RECenter, Fairfax County

We would be thrilled to start working with Communities for Clean Streams. Thank you very much for sharing the membership trials for our volunteers. I have some great volunteers in mind who would love this generous gift. Thanks again for thinking of Rock Creek Conservancy.

John Maleri, Program Coordinator, Rock Creek Conservancy

Woodend's Teale Center will unveil a gorgeous, new Forest Kindergarten classroom named in honor of Marcia Sward, the late Deputy Director of ANS who launched our highly successful Nature Preschool. And our brand new DC Environmental Literacy Fellow, Ambika Anand Prokop, will engage hundreds of DC students in growing organic vegetables, recycling school waste and developing sustainability plans. Watch for the unveiling of Woodend's *Tales and Trails*, a program that will complement our Virginia *Fresh Air Kids* program by helping young families to get outside for learning in nature. Look for a new *Top Ten* series of adult programs to help nature novices dip their toes into the rewarding study of natural world.

For me, one of the most exciting developments ahead will be the installation of our new deer fence! With the fence scheduled to be in place late this fall, we can begin in earnest the long overdue process of restoring the habitats of Woodend. Our mile-long fence will be paid for entirely from donations by ANS members and supporters. Just think of the learning opportunities that will abound for all Woodend visitors when our native plant gardens expand, our forest understory returns and our own Clean Drinking Stream begins to flow freely again! The possibilities take my breath away.

In the year ahead, we'll complete our first 5-year Strategic Plan with flying colors, and embark on setting strategic goals for the next five years. At our October 20<sup>th</sup> Annual Meeting, you'll get a first look at the Woodend Sanctuary Master Plan – the cumulative result of the year-long surveys, interviews and conversations we've conducted with you, experts, neighbors and communities we hope to serve. (Don't forget to RSVP – this Annual Meeting is bound to be packed!) These road maps for the future will ensure that the Audubon Naturalist Society grows, expands its outreach and transforms its flagship nature sanctuaries to serve our community for decades to come. Thank you for being part of the Audubon Naturalist Society family. I look forward to broadening Audubon Naturalist Society's horizons with you!



**STAFF UPDATES:** This summer we said farewell to Youth Education Director **Karen Vernon** (Chance to our summer campers and their families) as Karen and her family relocated to California. We welcomed **Nora Kelly**, aka Junebug, from Locust Grove Nature Center, as our new Camp Director. Nora was also one of our very own Master Naturalists. We are pleased to welcome **Eliza Cava** too as our new Director of Conservation. Eliza comes to us from Defenders of Wildlife where she worked as a Policy Analyst. Eliza's passion for local clean water and her highly organized and thoughtful approach to the Communities for Clean Streams campaign will be a welcome addition to ANS. Lastly, we are lucky to have **Allie Henn** as our new Development Assistant. Allie interned with us last year in the development department and this year in environmental education. We are pleased she is now with us full-time. Welcome Nora, Eliza and Allie!

# The Greenleafs: An Audubon Naturalist Society Family

by Kelli Holsendolph

Meet the Greenleafs: Forest Greenleaf, dad; Summer Greenleaf, mom; Rain Greenleaf, daughter; and Blade Greenleaf, son.

Forest works as a Research Entomologist with the National Institutes of Health. His job keeps him busy. Summer works too. She teaches fourth grade at Rock Creek Forest Elementary School. Rain is the oldest. She's a freshman in high school and wants to study biology and become a scientist, much like her dad. Blade's the baby. He's six years old and never leaves home without his favorite toy action figure Aquaman.

As a family, they are passionate about nature and love spending time outdoors. Family vacations often include camping trips or visits to iconic national parks. Weekends are usually spent as a family being active and getting outdoors – biking, hiking, birding. In fact, that is how the



*The Viechnickis are an Audubon Nature Preschool family. Photo courtesy of Gail Viechnicki.*

Greenleafs first discovered Audubon Naturalist Society (ANS).

One autumn morning the Greenleafs were biking along Rock Creek Trail and stopped at Woodend Nature Sanctuary. They meandered along the trails, admired the Blair Native Plant Garden and checked out the Audubon Naturalist Shop. They picked up more information on ANS and later became members. With ANS, they found plenty of opportunities to get outdoors and enjoy nature.

## Nature Backpacks

Sometimes Summer and Rain spend an afternoon together exploring Woodend with the nature backpacks. Sometimes it's a father and son activity with Forest and Blade.

Nature Backpacks are FREE to check out in the Audubon Naturalist Shop at Woodend. All you need is a photo ID. The backpacks offer self-guided exploration of the grounds. There are eight different backpack themes from which to choose:

Birds of a Feather; Incredible Insects; Our Watershed; Who's Been Here—Tracks and Scats; Sensing Nature; Pollinator Paradise; Nature Art; and Tall Trees.

Inside each backpack, nature explorers find reference materials and activities. For instance, the Nature Art backpack is filled

*Families get ready for the Eggstravaganza at Woodend. Photo by Jacky Wershba.*



with watercolor pencils and brushes, crayons, art paper, a magnifying glass, a ruler, a nature journal and some books and guide sheets. Incredible Insects: two bug boxes, an insect net, 15 rubber insects, a magnifying glass and insect ID book.

Not just a great bargain, the loaner backpacks allow families to discover and investigate at their own pace, developing an appreciation and enjoyment of nature and real science skills.

## Weekend Walks in the Woods

On the first Saturday of every month, all the Greenleafs head to



*Families attending ANS's Vamos al Bosque program at Woodend. Photo by Cathy Grubman.*

Father and child attending ANS free Beginner Bird Walk. Photo by Chan Chao.



Woodend for Weekend Walks in the Woods.

The one-hour walk uses the Woodend grounds as its living classroom. The group of usually 10 to 50 depending on time of year and weather, hike to the aquatic pond and through the wildflower meadow at Woodend. A different nature topic is discussed each month and along the way. Previous walks have focused on predators and prey, birdwatching and insects.

Of a recent walk a participant just about Blade's age said the best part of the day was, "finding the frogs in the pond."

### Nature Birthday Parties

When it was time for Blade's seventh birthday, the Greenleafs knew exactly where to hold his party – ANS.

ANS offers birthday parties for children ages four to ten at two locations—Woodend Nature Sanctuary in Chevy Chase and Rust Nature Sanctuary in Leesburg. Party hosts choose from several nature themes: Wiggly Worms! All About Birds! Ponding! Insect Investigation! Reptiles and Amphibians! Animal Clues! Winter Detectives!

Parties are held year-round, Fridays, Saturdays and Sundays. They are about one and a half hours long. There are party rooms at both locations. Each party is assigned an ANS naturalist to

lead the celebration. Party hosts are also able to bring in food, drinks and decorations.

### School's Out Camps

During the school year, both Rain and Blade got a lot out of ANS's School's Out Nature Camps. Blade learned more about nature, got outdoors to explore, hiked, played field games and made nature crafts; while Rain earned Student Service Learning hours working on a stormwater project for Woodend.

ANS offers School's Out Nature Camps when Montgomery County Public Schools are closed for one-day holidays, such as professional days for teachers and election days.

For students grades K through 5, ANS offers the Nature Adventures School's Out Camp. The Eco-Team Service Learning Camp is for grades 6 through 9. Class sizes are about 16 children or less to allow for plenty of teacher-student interaction. The camp day runs from 8:30 am to 5:30 pm.

---

The Greenleafs may be a fictional Audubon Naturalist Society family, but the opportunities for families to get outdoors with ANS are real and plentiful. Find these and other chances to get into nature with your family this autumn.

## Family Programs with ANS this Fall

**New! Tales & Trails:** Tuesdays at 10:00 am for ages 2 to 4 years with a caregiver at Woodend Nature Sanctuary enjoy nature stories, songs, games and Woodend's trails. See page 10 for more.

**Fresh Air Kids:** Fresh Air Kids meet once a week at two Virginia locations starting this fall: Rust Nature Sanctuary in Leesburg and Algonkian Regional Park in Sterling. Classes are for children ages 5 and younger along with a parent or caregiver. Activities include crafts, songs, books, nature journaling and hiking outdoors. See page 11.

**Creek Critters in Antietam Creek:** A fun family activity for National Public Lands Day. Join ANS and Clean Streams partner The Alice Ferguson Foundation as we search for critters living in Antietam Creek using the ANS Creek Critters app. See page 8 for more information.

**Beginner Bird Walks:** These free, one-hour walks led by volunteers give adults and families the chance to explore the Woodend grounds in search of many resident and migrating species. Walks are held Saturdays from 8:00 am to 9:00 am, September through November. Meet in the Shop parking lot.



Family attending an ANS special event. Photo by Micah Jordan.

# Conservation



## Q&A with Eliza Cava, ANS Director of Conservation



Eliza Cava is the new Director of Conservation for Audubon Naturalist Society (ANS). She comes to the job with a wealth of experience and expertise. Previously, Eliza worked as a Policy Analyst, Renewable Energy and Wildlife, for Defenders of Wildlife. She was a Chesapeake Regional

Network Fellow with the Environmental Leadership Program. Her strengths are in energy and wildlife policy, water resources management and environmental education. She also likes to get outdoors—teaching wilderness skills or kayaking on the Potomac River. Eliza earned a Bachelor of Arts in Environmental Education from Swarthmore College and a Master of Environmental Science from the Yale School of Forestry and Environmental Studies. She currently lives in Washington, DC.

**ANS: Welcome Eliza! So, first impressions of Audubon Naturalist Society?**

EC: My first experience with ANS was that I have a number of friends who took the naturalist education classes. They all love Audubon! Also, many people at my former office had experience with the camp programs—they raved about them. I haven't been here very long, but I certainly have formed fantastic impressions of the staff. We've been exploring and exchanging ideas. We've been sharing our excitement regarding the conservation program successes and what to expect in the future. I think the mission of ANS is a great match for me; I operate at the intersection of science, policy and education. And of course, coming to work every day surrounded by children in camps—hooting and hollering with joy—is wonderful!

**ANS: When did you realize that environmental science was your passion?**

EC: I grew up canoeing and camping in the Florida Everglades with my family, and loved being in nature and being on the water. In high school, I had the opportunity to participate in an immersive environmental education program and I realized that I could do what I loved—being outside in nature, working with kids—as a career. Then later I realized I wanted not only to teach about nature, but also to work to protect it, so I went to graduate school and moved into environmental policy. I'm proof that ANS's catch phrase – Enjoy. Learn. Protect. – works!

**ANS: What are the main conservation issues that you will be tackling at ANS?**

EC: We are working on the Communities for Clean Streams campaign. And building on the tools that we have developed already—Creek Critters, Stream Snapshots, our water quality monitoring, and trainings that we've had great success with. We are going to keep doing that, build on those strengths, and grow to expand our presence across the metro region. Also, it's an honor to step into the big shoes of Diane Cameron, our previous director of conservation, and I look forward to working with her on the new Woodend rain garden right away.

**ANS: How is ANS working with local partners in conservation?**

EC: I have met many partners that attest to the credibility and leadership of ANS in the community. I am really looking forward to meeting all the partners and working with them. We are part of a big community.

**ANS: What do you enjoy most about your new job?**

EC: Getting muddy in the creek! And also being there with volunteers and the community.

—Compiled by Cathy Grubman



Innovative  
Landscapes  
for  
Outdoor Living

MARK WILLCHER & CO., INC.  
landscape designers/contractors

*Building sustainable gardens for birds,  
wildlife and people since 1980.*

**www.MarkWillcherCo.com**  
301-320-2040  
Mark@MarkWillcherCo.com

WASHINGTONIAN AWARD WINNER

## Ten Mile Creek Developers At It Again...Pulte Subpoenas ANS, Other Coalition Members

This summer, Audubon Naturalist Society (ANS) along with twelve other individuals and groups in the Save Ten Mile Creek Coalition received a subpoena to produce documents for a lawsuit brought by Pulte Home Corporation against Montgomery County. Pulte is suing the County in federal court to recover damages from lost development rights in the Ten Mile Creek watershed.

ANS attorney Don Mitchell, from Washington's Arent Fox law firm, filed an objection to the subpoena on the following grounds:

- It violates the 1st amendment rights of those subpoenaed;
- The documents requested are not needed for the lawsuit;
- The document request is overbroad; and
- Producing the documents requested is burdensome.

ANS's attorney is representing all the individuals and nonprofits who received subpoenas, including the Friends of Ten Mile Creek. Arent Fox filed objections on behalf of all groups. Pulte responded to the objection by indicating they will pursue the subpoenas with a court order.

What's next? The court could: a) uphold the objection without a hearing; b) call a hearing and uphold the objection; or c) call a hearing and reject the objection.

Either way, ANS members and clean water community advocates should stand at the ready. If the judge upholds the objection, we will celebrate victory over a punitive subpoena designed specifically to quash citizen engagement in public land use decisions. If the judge rejects the objection, we may call on the federal Court of Appeals to uphold the objection. We can't let Pulte set a terrible precedent of punitive actions against citizens and small nonprofits who engage in constitutionally-protected democratic activity to protect our environment and the Chesapeake Bay watershed.

### Save the Date

**ANS Annual Meeting**  
**Thursday, October 20, 6-9 pm**



### STAY & EXPLORE CUMBERLAND

A refreshing retreat on your journey thru Historic Cumberland. The home is listed on the National Register of Historic Places, built 1896. Furnished with antiques and art. Wooden floors, chandeliers, and porch with rockers. Biker friendly, close to Amtrak & downtown. More info at

[cumberlandzenhouse.com](http://cumberlandzenhouse.com)

## The Wild Geese

By Jim Dronenburg (ANS Member)

*We bought our house, on a hill, for the view  
Of the river and the hills on the other side;  
But buying in summer, we did not know  
What sights and sounds would come to us  
When the wild geese fly over.*

*Slowly, small at first, in twos, threes, fives,  
The lines begin at summer's end,  
Growing, through the fall,  
To great, sprawling V's of calling birds,  
Coming from the river in the morning,  
Going back to the river at night.*

*The sound of their cries is a joy to me, dawn and dusk;  
It means Fall is coming, or is come;  
The leaves are turning, the air is wine  
And the year is going,  
In the clear, thin sunlight and the chilly wind  
That blows from the low, rounded hills.*

*A wing's ghostly calls in the night are a joy to me,  
Echoing, lonely,  
A reminder that outside, there is the dark and the moonlight  
And a world that exists outside human concerns,  
Journeys to be made  
And destinations to reach,  
That I shall never know or be part of.*

*Their cries in the Spring are a joy again,  
Along with the first sound of the peepers  
And the first tiny pink flash of the Spring-beauties;  
I know the cold is in retreat,  
And the winter will soon be finished and gone,  
When the wild geese fly over.*

*All year- summer, winter, fall or spring,  
You will occasionally hear them;  
I stop in my work, straighten up, and look,  
Hoping to see even a single bird in the sky above me;  
And I have prayed  
That God will never let me grow used to the sight or the sound of it,  
When the wild geese fly over.*



FRIEND ANS ON FACEBOOK

# Children & Family Programs

You and your kids can unplug and explore nature every day at Woodend and Rust nature sanctuaries, open dawn to dusk for free, 365 days a year. Our trained naturalists and excellent volunteers are eager to introduce children to nature in all kinds of ways – through the Audubon Nature Preschool, Summer Camp, Nature Birthday Parties, and Family Programs, and at your children's school through School Programs and GreenKids. Consider having your PTA or PTO sponsor a nature activity for your school!

## Summer Camp 2017 Important Dates

**Thursday, December 1, 2016**

Last day to become a member and be eligible for members-only registration

**Late December, 2016**

Catalog mailed to ANS members

**Saturday, January 28, 2017, 9 a.m.**

Registration opens to ANS members who joined by 12/1

**Thursday, February 2, 2017, 9 a.m.**

Registration opens to nonmembers and to new members who joined after 12/1

Register at <https://ansevents.eventsmart.com>

## Weekend Walks in the Woods!



- First Saturday of the month, 9am-10am
- Free, no registration required
- All ages welcome!
- Each month, an ANS naturalist will cover a different topic, such as deer, fungi, trees, insects, and birds
- Meet at the gazebo by the Audubon Naturalist Shop



**FREE**



## Nature Backpacks

Visit our Naturalist Shop to check out a backpack that will have tools and activities you and your family can use to explore nature right here at Woodend Sanctuary. Themes include birds, insects, trees, nature art, and more. Backpacks are free for check-out in the shop but must be returned by 4:30 pm.



## Creek Critters in Antietam Creek

**Saturday, September 24  
(10:30 am-12:30 pm)**

**Leaders: Gregg Trilling and Sandy Brown (AFF)**

**Free, but registration required.**

Looking for a fun activity for National Public Lands Day? Join ANS and our partner The Alice Ferguson Foundation as we search for critters living in Antietam Creek. We'll use the Creek Critters app to identify macroinvertebrates and to create stream health reports. This is a great opportunity to search for critters we don't find in degraded streams closer to Woodend Sanctuary. We'll work in shallow water near the Newcomer House on the eastern edge of Antietam National Battlefield. Children over 10 with a parent are welcome to attend. Register online through the adult program registration link at [www.anshome.org/adultnatureprograms](http://www.anshome.org/adultnatureprograms).

## Spring Break Camp

Grades K-9

**Monday, April 10-Friday, April 14**

**8:30 am-3 pm**

Extended camp from 3-5:30 pm

**Members \$347**

**Nonmembers \$432**

**Extended Camp \$115**

Spend your spring break outdoors on our beautiful nature sanctuary. Campers will spend a week discovering salamander eggs, flower buds, wood frog calls, and other signs of spring. Outdoor play, crafts, songs, and stories will enhance our natural history learning. Grades 6-9 can earn 20 SSL hours.

**REGISTER  
ONLINE**  
[anshome.org/  
schoolsoutcamp](http://anshome.org/schoolsoutcamp)



## School's Out Nature Camp

*On one-day holidays!*

### Woodend Nature Sanctuary

Monday, September 12 (K-9)

Monday, October 3 (K-9)

Wednesday, October 12 (K-9)

Monday, November 7 (K-9)

Tuesday, November 8 (K-9)

Friday, January 20 (K-9)

Friday, January 27 (K-9)

8:30 am-5:30 pm

Members \$85 per day

Nonmembers \$100 per day

### Grades K-5:

#### Nature Adventures

We pack each day with a variety of nature-themed, hands-on activities including outdoor exploration, nature hikes, field games, and crafts.

### Grades 6-9:

#### Eco-Team Service Learning

Earn SSL hours while learning about the natural environment. Each day focuses on an environmental theme with four hours of service learning projects and tons of nature fun.

**REGISTER  
ONLINE**

**[anshome.org/  
schoolsoutcamp](http://anshome.org/schoolsoutcamp)**

#### For More Information:

- Call 301-652-9188 X10
- Email: [carol.hayes@anshome.org](mailto:carol.hayes@anshome.org)

#### Cost:

- \$225 for ANS members
- \$260 for nonmembers, which includes a one-year family membership to ANS

#### Birthday Party Times:

- Fridays, 4:00-5:30 pm
- Saturdays, 10:30 am-12 pm or 1:30-3:00 pm
- Sundays, 10:30 am-12 pm or 1:30-3:00 pm

#### Register:

[anshome.org/birthday](http://anshome.org/birthday)



## Nature Birthday Parties!



## GreenKids

**An Environmental Program in Search of ... a Few Good Montgomery & Loudoun County Public Schools**

Would your school benefit from these FREE services?

- Environmental activities that meet MCPS & LCPS standards
- Two years of free classroom visits from Audubon naturalists
- Materials funds for Schoolyard Projects
- Field trip subsidies to Audubon Nature Sanctuaries

Principals, teachers, and parents interested in having their schools join GreenKids, contact Diane Lill, Project Director, at [diane.lill@anshome.org](mailto:diane.lill@anshome.org). For more information, visit [ansgreenkids.org](http://ansgreenkids.org).

## Vamos al Bosque! at Meadowside Nature Center

Jueves 20 de Octubre, de 10:30 a 11:30 am

GRATIS



Todas las familias hispanas están invitadas a explorar el bosque. Vamos a caminar observado la naturaleza y descubriendo que ha traído el otoño. El bosque tiene muchas oportunidades para que nuestros niños desarrollen importantes destrezas. Programa en español para familias con niños de 3-5 años. No es necesario registrarse.

A nature walk for families with young children (ages 3-5) delivered in Spanish by naturalists from the Audubon Naturalist Society in collaboration with Meadowside Nature Center (5100 Meadowside Lane, Rockville, MD 20855). Questions? Contact Gina Ghertner at (646) 761-9928.



The Audubon Nature Preschool offers programs for children aged 5 and younger. Children benefit from exploring the natural surroundings of the 40-acre sanctuary, which offer endless opportunities for investigation and discovery.

The Audubon Nature Preschool builds on children's inherent curiosity about the world by using hands-on, nature-based activities to foster social, physical, and academic skill development.

All Nature Preschool programs run September-May and follow the MCPS calendar.

## Drop-off Programs

### Saplings

3-5 year olds  
Mondays through Thursdays  
AM program, 8:45-11:45 am  
PM program, 12:45-3:15 pm

### Oaks

Forest Kindergarten extended day  
All outdoor program  
Mondays through Thursdays, 11:45 am-2 pm; Fridays, 9 am-12 pm  
\*Oaks attend AM Saplings class  
Mondays through Thursdays

## Parent and Child Programs

### Acorns

4 year olds and younger  
All outdoor program  
Thursdays, 9:30-11 am  
Sibling discounts available

### Sprouts

2-3 year olds  
Activities on the trails & in the preschool  
Fridays, 9:30-11:30 am

### CONTACT US

301-652-9188 x32  
[www.ANShome.org/preschool](http://www.ANShome.org/preschool)

## APPLY ONLINE

[ANSHOME.ORG/PRESCHOOL](http://ANSHOME.ORG/PRESCHOOL)



ANS EE photo

## School Field Trips

### Explore nature with your students!

Bring your class to Woodend Sanctuary for a hands-on field trip experience, or let us come to you with our Naturalist in Your Classroom program! All of our programs are correlated with Montgomery County Curriculum 2.0, the Next Generation Science Standards.

Our 2016-2017 school program brochure is available at [ANShome.org/school](http://ANShome.org/school).

### Stone and Holt Weeks Scholarship

The Stone and Holt Weeks Nature Field Trip Scholarship is awarded once a semester to a DC public or charter school for students in Pre-K through 2nd grade and covers up to \$1,000 of program and bus transportation fees. To learn more about this scholarship opportunity, visit [ANShome.org/school](http://ANShome.org/school).

## Tales and Trails

NEW!

Ages 2-4 with a caregiver

Fall Session: \$75 per child (9/27-11/29)

Winter Session: \$75 per child (12/6, 12/13, 12/20, 1/3, 1/10, 1/17, 1/24, 1/31, 2/7, 2/14)

Spring Session: \$75 per child (3/14, 3/21, 3/28, 4/4, 4/18, 4/25, 5/2, 5/9, 5/16, 5/23)

On Tuesdays at ten o'clock, join us in the historic Woodend mansion for nature-themed stories and songs. We will read new books each week, enjoy learning nature songs and games, and explore Woodend trails.

Please feel free to relax and enjoy our trails, picnic areas, and bookstore before or after the program. Program starts at 10 am in the Woodend Dining Room followed by trail hikes outside until 10:45. Register online at [www.anshome.org/familyprograms](http://www.anshome.org/familyprograms). Questions? Contact Kylie at [kylie.watson@anshome.org](mailto:kylie.watson@anshome.org) or 301-652-9188 x44.



Photo by Diane Lill

## Support ANS — Monthly!

It's easy! Go to [ANShome.org/Donate](http://ANShome.org/Donate), or contact Loree Trilling at 301-652-9188 x35 or [loree.trilling@anshome.org](mailto:loree.trilling@anshome.org).

# Rust / Northern Virginia

## Fresh Air Kids – Two Locations!

Children are born naturalists. The Audubon Naturalist Society builds on children's inherent curiosity about the world by using hands-on, nature-based activities to foster social, physical, and academic skill development. Our Fresh Air Kids Class is for children ages 5 and younger along with a parent or caregiver. Classes might involve crafts, songs, books and always a hike. Bring your lunch or snack. Mingle and meet other caregivers!

**Rust Sanctuary, Leesburg ,VA**  
**Fridays (10-11:30 am)**

**Fall: September 30-December 2, 2016**

**Winter: January 13-March 3, 2017**

**Spring: March 17-May 19, 2017**

**Cost: \$100 (siblings 21 months and older \$85, siblings under 21 months free)**

**Sign up for all three sessions and receive \$50 off!**

Reservations not confirmed until payment received (checks only). Please mail checks made payable to ANS and send to ANS, Attn: Pam Oves, 8940 Jones Mill Rd, Chevy Chase, MD 20815. To register go to: [www.SignUpGenius.com/go/30E0C4DAAAC2FA2F49-fresh](http://www.SignUpGenius.com/go/30E0C4DAAAC2FA2F49-fresh).

**Algonkian Regional Park, Sterling, VA**  
**Mondays (10-11 am)**

**Fall: September 26-November 14, 2016**

**Early Spring: March 13-April 24, 2017**

**Late Spring: May 1-June 12, 2017**

**Cost: \$65 (siblings 21 months and older \$40, siblings under 21 months free)**

**Sign up for all three sessions and receive \$30 off!**

Reservations not confirmed until payment received (checks only). Please mail checks made payable to ANS and send to ANS, Attn: to Rust Sanctuary, 802 Children's Center Rd., Leesburg, VA 20175. Offered in partnership with NOVA Parks. To register go to: [www.SignUpGenius.com/go/30E0C4DAAAC2FA2F49-201617](http://www.SignUpGenius.com/go/30E0C4DAAAC2FA2F49-201617).



Photo by Diane Lill

## RUST NATURE SANCTUARY

KIDS GROW BETTER OUTSIDE

703-669-0000 | [ANSHome.org/Rust](http://ANSHome.org/Rust)  
 802 Childrens Center Road, Leesburg, Virginia

## Naturalist in the Classroom

Can't come to Rust on a field trip? **Reduce your carbon footprint** and we will come to you!

ANS programs support key components of project-based learning via real world connections and are designed to meet Virginia Standards of Learning. Programs highlight human impacts, ecological systems, natural resources, investigations, and natural processes through hands-on, STEM focused classroom activities.

- PreK-5th: Wonderful Worms, Reptiles and Amphibians, Birds of a Feather, Green Cleaners
- 3rd-5th: We All Live Downstream, Skull and Scat, Watts Up, Paper making, Enviroscope, Erosion in a Bottle.

Email Susanne Ortmann at [susanne.ortmann@anshome.org](mailto:susanne.ortmann@anshome.org) for more information and to book a school visit.



Photo by Stephanie Bozzo

## Do you participate in the National Capital Area CFC?

The easiest way to support ANS is to designate the **Audubon Nationalist Society 75493** in the 2015 Combined Federal Campaign under EarthShare Mid-Atlantic.



# Adult Programs

These programs offer nature novices and experienced naturalists alike an array of opportunities to explore and learn about our area's natural history. All programs are led by experienced naturalists. Lectures are held at Woodend Sanctuary. Field trips are reached by private vehicle or carpool.

## ONLINE REGISTRATION FOR ADULT PROGRAMS

- Visit [www.ANShome.org/adultnatureprograms](http://www.ANShome.org/adultnatureprograms) and click on "Register Online."
- All adult program participants will be "New Users" the first time they register.
- All changes/cancellations/transfers must be handled through the EE office.
- If a class is full, you may waitlist for it for free online.
- Questions? Call Pam at 301-652-9188 x16 or email [pam.oves@anshome.org](mailto:pam.oves@anshome.org).

## Fall Butterflies of the Occoquan Wildlife Refuge

Saturday, September 10 (full-day field trip)

Leader: Stephanie Mason

Members \$34; nonmembers \$46

A former military research station, the 644-acre Occoquan Bay National Wildlife Refuge is located at the confluence of the Potomac and Occoquan Rivers south of Alexandria, VA. More than 60 butterfly species have been recorded among its wet meadows, expanses of native grasses, and extensive shoreline. We'll explore a variety of habitats in search of late-season butterflies, such as Sleepy Orange, Buckeye, Cloudless Sulphur, and Monarch, among others. We'll walk up to 3 miles in generally open and sunny terrain.

## Late Summer Meadow

Sunday, September 11 (12:30-5 pm)

Leaders: Stephanie Mason and Cathy Stragar

Members \$24; nonmembers \$34

Join two naturalists for a closer look at the web-of-life in both wet and dry meadows at Little Bennett Regional Park in upper Montgomery County, MD. We'll search for the wildlife that finds food and shelter amidst the late-blooming, sun-loving wildflowers and fruiting grasses, including butterflies and other late season insects, birds, and reptiles and amphibians.

## Fall Birding Series

A: Sunday, September 11: Paint Branch Trail, MD (Mark England) (7-10 am) **FULL**

B: Saturday, September 24: Kenilworth Aquatic Gardens, DC (Mike Bowen) (7-10 am) **FULL**

C: Sunday, October 2: Blue Mash Nature Trail, MD (Mark England) (7:30-10:30 am) **FULL**

D: Saturday, October 15: Occoquan Bay NWR, VA (Mike Bowen) (7:30-10:30 am)

E: Sunday, October 23: Patuxent River Park/Jug Bay Natural Area, MD (John Bjerke) (8-11 am)

F: Saturday, November 5: Huntley Meadows, VA (Mike Bowen) (8-11 am)

G: Sunday, November 13: Hughes Hollow, MD (John Bjerke) (8-11 am)

Each walk members \$24; nonmembers \$34

Entire series \$134/\$190

Our fall birding series visits seven protected areas, all under an hour's drive from D.C., where a variety of habitats — including field, forest, and wetland — provide good opportunities for the observation and identification of birds in autumn. On the earliest walks, we'll hope to catch some southbound migrants. As the season progresses, we'll watch for sparrows, raptors, waterfowl, and other birds. These teaching walks are aimed at beginning to mid-level birders, but all are welcome. Most of our explorations will be on natural surface trails that may be uneven or muddy.

Do you want to read your *Naturalist Quarterly* online and reduce paper use and printing costs? If so, email [membership@anshome.org](mailto:membership@anshome.org), and ask to be taken off our mailing list.



This ANS service offers weekly reports of sightings of rare or notable birds. Email [voice@ANSHome.org](mailto:voice@ANSHome.org) or visit [ANSHome.org/voice](http://ANSHome.org/voice).



## Midweek Meanders Along the Canal

Wednesdays (10 am-12:30 pm)  
**A: September 14 - Carderock ; B: September 28 - Riley's Lock; C: October 5 - Widewater; D: October 19 - Pennyfield Lock; E: November 2 -Swain's Lock; F: November 30 - Violette's Lock**  
**Leader: Stephanie Mason**

These walks are full but please register for the waitlist online as we often get a cancellation or two.

## Bat Chat

Thursday, September 15 (7:30-9 pm) **FREE**  
**Leader: Fred Seitz**  
**Free, but registration required.**

Come and explore the natural history and conservation concerns of the bats of our region with this program at our Woodend Sanctuary in Chevy Chase, MD. We will learn about the habits and habitats of these fascinating mammals through a slide lecture. We'll also head out onto the sanctuary grounds for a short search for bats in the evening sky. Our leader is a Master Naturalist Volunteer with a particular passion for these flying mammals.

## Fall Flight at Cromwell Valley Park

Saturday, September 17 (3/4 day field trip)  
**Leaders: Hal Wierenga and Lynn Davidson**  
**Members \$30; nonmembers \$42**

Bring along a folding chair and cross your fingers for a good day of raptor flight at this hawk watch in Baltimore County, just outside the northern side of the Baltimore Beltway. Our trip is scheduled close to peak for the southward passage of Broad-wing Hawks in massive numbers. Of course, we can't control weather conditions or migratory pulses, but our leaders will do their best to give you a productive day of birding. That will include exploring some of Cromwell Valley Park's trails for fall migrant songbirds, and perhaps even heading out to other close-by locations in the afternoon if the hawk flight is slow.

## Know Your Invasive Plants

Woodend Sanctuary (Teale), Chevy Chase, MD  
 Saturday, September 17 (9:30 am-noon)  
**Fee \$12, waived for members and students earning SSL credit**



Invasive plants that kill or bring down mature trees can seriously alter stream health and ecosystem function. Volunteer Master Naturalist Diyan Rahaman will help you identify non-native invasive plants at Woodend and in nearby Rock Creek Park. Registration required. An ANS/Rock Creek Conservancy Partnership.

## On the Move at Cape May

Monday, September 19 (9 am) to  
 Tuesday, September 20 (4 pm) **FULL**  
**Leader: Mark Garland**  
**Members \$100; nonmembers \$140**  
 FULL - Register for waitlist online.

## Woodend Master Plan Walks

H: Wednesday, September 21 (10-11 am)  
 I: Saturday, October 1 (9-10 am) **FREE**  
**Leader: Lisa Alexander**  
**Free, but registration required for each session.**

Tour Woodend with the Executive Director to learn more about the Woodend Master Plan now under development and to share your ideas for transforming our beloved nature sanctuary into a premier environmental destination for the region.

## Georgetown Geology Loop Hike

Saturday, September 24 (9 am-1 pm)  
**Leader: Joe Marx**  
**Members \$24; nonmembers \$34**

The Georgetown section of Washington, DC sits squarely on a mass of ancient granite, surrounded by various other types and ages of rock. Our hike will be about 5 miles long, through wooded parkland and along city streets. The terrain is easy to moderate, with hills being the biggest challenge. During our hike, we will visit the Coastal Plain, three canyons, the Piedmont upland, and a major fault zone. Not bad for a walk around town. *This hike will move at a faster pace than our usual "naturalists" shuffle.*

## Creek Critters in Antietam Creek

Saturday, September 24 (10:30 am-12:30 pm)  
**Leaders: Gregg Trilling and Sandy Brown (AFF)** **FREE**  
**Free, but registration required.**

Looking for a fun activity for National Public Lands Day? Join ANS and our partner The Alice Ferguson Foundation as we search for critters living in Antietam Creek. We'll use the Creek Critters app to identify macroinvertebrates and to create stream health reports. This is a great opportunity to search for critters we don't find in degraded streams closer to Woodend Sanctuary. We'll work in shallow water near the Newcomer House on the eastern edge of Antietam National Battlefield. Children over 10 years old are welcome to participate with an adult. Carpooling will be available from Woodend Sanctuary.



## Fall Botany at Gunpowder Falls State Park

Sunday, September 25 (10 am-2 pm)  
 Leader: Dwight Johnson  
 Members \$24; nonmembers \$34

Our leader describes the Hereford Area of Gunpowder Falls SP in Central Baltimore County as “the best walk in the Maryland piedmont.” Join him on this 2-mile hike through rich upland and bottomland woods where we’ll make frequent stops to ID and admire trees and shrubs, ferns, fall fruits, and late-blooming wildflowers. Trails are natural surface and may be muddy and uneven.

## “DDT Ban: Greatest Conservation Accomplishment in our Nation’s History”

**AUTHOR LECTURE**

Thursday, September 29 (7:30-9 pm)

Join us at Woodend Sanctuary to hear Charles F. Wurster discuss his book “DDT Wars” on Thursday, September 29. For more info see page 28. Event is **free** but please RSVP to pam. oves@anshome.org or call 301-652-9188 x16.

## Late Season Wildflowers

Saturday, October 1 (8:30 am-Noon)  
 Leader: Sujata Roy  
 Members \$24; nonmembers \$34

We’re returning to the wetlands of Huntley Meadows Park, Alexandria, VA, to search for the last blooms of the season in the rich marsh habitats there. Plants will be our primary focus, we’ll also keep our eyes and ears open for wildlife, including still-active turtles, frogs, butterflies, and other wildlife. Flat walking conditions predominate, but forest trails may be muddy.

## Window into the World of Fungi

Thursday, October 6 (7-9:30 pm)  
 Leader: Tovi Lehmann  
 Free, but registration required.

**FREE**

Rooted, yet not plants, heterotrophs, but not animals (growing in fairy rings, yet not even fairies), fungi are members of another kingdom. Mostly hidden under the surface, fungi have evolved their own solutions to life’s persistent problems. Gaining the recognition for their pivotal role in shaping the living world, they now reshape fundamental perceptions of biologists. In this lecture at our Woodend Sanctuary, we will explore the natural history and ecology of our local fungal neighbors, rather than focus on the edibility of particular species of mushrooms.

## Fall Flora Fridays

Fridays (10 am-12:30 pm)  
**A:** Friday, October 7: Scott’s Run Nature Preserve, VA (Leader: Liz Jones)  
**B:** Friday, October 21: Blockhouse Point, MD (Leader: Marney Bruce)  
**C:** Friday, November 4: Little Bennett Park, MD (Leaders: Marney Bruce and Liz Jones)  
 Each walk: members \$20; nonmembers \$28  
 Entire series \$54/\$75

On Fall Flora Fridays, we’ll enjoy the area’s rich diversity of plant life during this season of lingering blooms, developing fruits, and changing color. Join us for one or more of these visits to nearby natural areas. Although aimed at beginning to mid-level plant enthusiasts, all are welcome. Walks A and B include uphill/downhill hiking in upland and bottomland woods for a total of 1.5-2 miles on natural surface trails. Walk B will also include a stream crossing, but there will be helping hands to manage it. Walk C traverses level ground.

## Fall in the Parks

**Section A:** Saturday, October 8—Battle Creek Cypress Swamp, MD (10 am-2:30 pm)  
**Section B:** Sunday, October 23—Kenilworth Aquatic Gardens, DC (8:30 am-1 pm)  
**Section C:** Saturday, November 5—Mason Neck Wildlife Refuge, VA (8:30 am-1 pm)  
 Leaders: Stephanie Mason and Cathy Stragar  
 Each walk members \$24; nonmembers \$34  
 Entire series \$65/\$91

Join these seasonal, broad-based nature explorations of nearby parks rich in natural history. We’ll walk up to 3 miles, on possibly muddy surfaces, as we enjoy changing fall colors, late season blooms, migrant birds and butterflies, and all manner of wildlife. Battle Creek Cypress Swamp Sanctuary in Calvert County is considered the northwestern-most bald cypress swamp in the US. Here, piney woods and farm fields surround the 100-acre swamp, accessed by a boardwalk trail. Kenilworth Aquatic Gardens Park, on the banks of the Anacostia River, harbors a variety of plant and animal life in its swamp, marsh and woodland habitats within sight of urban sprawl. An exploration of the Coastal Plain woods and wetlands of Mason Neck National Wildlife Refuge near Woodbridge will conclude our series.

### Love Our Adult Nature Outings?

Celebrate a special occasion by giving a friend or family member a customized ANS nature walk. For details, contact Senior Naturalist Stephanie Mason at [stephanie.mason@anshome.org](mailto:stephanie.mason@anshome.org).



ANS EE photo

## Intro to Tree Identification

Friday, October 14 (10 am-3 pm)

Leader: Stephanie Mason

Members \$30; nonmembers \$42

Fall is a great time to learn to identify our local trees and shrubs. With brilliant leaves highlighting the twigs, new buds already formed, and many fruits hanging on, there are lots of distinguishing features that help sort out the various species. This program at our Woodend Sanctuary will begin indoors with a look at some techniques of tree identification, coupled with practice using a simple key. We'll then move outdoors to use our new skills to identify many of the trees growing on the grounds. Both beginners and those who want to brush up on their ID skills are welcome.

## Fall on the Appalachian Trail

Sunday, October 16 (full-day hike)

Leader: Stephanie Mason

Members \$34; nonmembers \$46

One of the best ways to explore the seasonal richness of our region is to take a trek along the Appalachian Trail. We'll hike about 6 miles in the fall woods on Maryland's South Mountain, covering the stretch from Gathland State Park, the former estate of a Civil War correspondent, to Fox Gap, an area of heavy fighting in the Battle of South Mountain. We'll stop to enjoy fall plant displays, as well as animal activity, but we will keep a pace necessary to cover the distance stated. *Our hike should be considered moderately strenuous to strenuous, with both uphill and downhill hiking over rocky and uneven terrain.*

## Fall Fungus Walk

Saturday, October 22 (9 am-12:30 pm)

Leader: Tovi Lehmann

Members \$24; nonmembers \$34

Fall is a great time to get introduced to the most common families of fungi in our area and find out more about their natural history and many ecological functions. We'll visit Brookside Park in Montgomery County, where the natural surface trails will include some uphill and downhill walking. *Note: the focus of our field trip is fungi's important and under-appreciated role in forest ecology, not the edibility of particular species of mushrooms.*

## Native Plant Gardening for Homeowners

Fall Walk: Tuesday, October 25 (10 am-Noon)

Winter Walk: Wednesday, January 18 (10 am-Noon)

Leader: Stephanie Mason

Each walk members \$20; nonmembers \$28

Explore the Blair Native Plant Garden, located just outside the Sanctuary Shop, with our Senior Naturalist who helped develop the garden and its educational focus. Find out more about the values of gardening with native plant species, including: lower maintenance; more value to native birds, butterflies and other insects, including pollinators; reduced negative impact on local ecosystems, and more. We'll discuss native alternatives to popular non-native species such as English ivy, as well as resources for broadening one's knowledge and understanding of plants native to the mid-Atlantic. You're welcome to bring along a bag lunch to eat with the leader after the walks, which are scheduled to highlight seasonal aspects of the Garden.

## The Natural and Cultural History of the Ag Reserve

Wednesday, October 26 (10 am-4 pm)

Leaders: Melanie Choukas-Bradley & Stephanie Mason

Members \$32; nonmembers \$44

Thirty-four years ago, with regional farmland rapidly diminishing, Montgomery County had the foresight to set aside more than 90,000 acres of farms and open space in the western and northern third of the county as an "Agricultural Reserve." Come explore this scenic, biologically diverse area and learn how it contributes to clean air and water, the availability of fresh local produce, and the overall quality of life for residents of the metro area. Our trip will visit a working CSA farm, a fall produce and pumpkin stand, an historical site, and perhaps an artist's studio, time permitting, to experience the rich diversity of plants and wildlife (and human livelihoods) that thrive in the Reserve's fields, meadows, wetlands, and rocky woodlands. We'll begin and end the tour in some of the beautiful parkland along its borders: Seneca Creek State Park and Dickerson Conservation Park, site of an American sycamore, officially the largest known tree in MD.

## Late Fall at Cape May

Saturday, October 29 (8 am) – Sunday, October 30 (5 pm)

Leader: Mark Garland

Members \$100; nonmembers \$140

FULL - Register for waitlist online.

**FULL**

Date	Time	Activity	Fee	Page	Date	Time	Activity	Fee	Page
Sep 3	8 am	Beginner Bird Walk at Woodend		20	Oct 15	8 am	Beginner Bird Walk at Woodend		20
"	9 am	Weekend Walks in the Woods		8	Oct 16	7:30 am	Meadowside Nature Center bird walk		23
"	10 am	Master Gardener Plant Clinic		21	"	full day	Fall on the Appalachian Trail	Y	15
Sep 4	8 am	Sycamore Landing bird walk		23	Oct 19	10 am	Midweek Meander Along the Canal D	Y	13
Sep 10	6:30 am	Patuxent River Park bird walk		23	Oct 20	6 pm	ANS Annual Meeting		32
"	8 am	Beginner Bird Walk at Woodend		20	Oct 21	10 am	Fall Flora Friday - Blockhouse Point	Y	14
"	10 am	Master Gardener Plant Clinic		21	Oct 22	8 am	Beginner Bird Walk at Woodend		20
"	full day	Fall Butterflies of the Occoquan	Y	12	"	9 am	Fall Fungus Walk	Y	15
Sep 11	7 am	Fall Birding Series A	Y	12	Oct 23	8 am	Fall Birding Series E	Y	12
"	12:30 pm	Late Summer Meadow	Y	12	"	8:30 am	Fall in the Parks - Mason Park	Y	14
Sep 12	8:30 am	School's Out Nature Camp	Y	9	Oct 25	10 am	Native Plant Gardening for Homeowners	Y	15
Sep 13	6 pm	Fall Woody Plant ID begins	Y	24	Oct 26	7:30 am	Woodbridge/Occoquan Bay bird walk		23
Sep 14	10 am	Midweek Meander Along the Canal A	Y	13	"	10 am	Natural and Cultural History of Ag Reserve	Y	15
"	7 pm	The Living Soil begins	Y	25	Oct 27	7 pm	Crowder-Messersmith Annual Talk		27
Sep 15	7:30 pm	Bat Chat		13	Oct 29	8 am	Beginner Bird Walk at Woodend		20
Sep 17	3/4 day	Fall Flight at Cromwell Valley Park	Y	13	"	"	Late Fall at Cape May	Y	15
"	8 am	Beginner Bird Walk at Woodend		20		9 am	A Year at Boundary Bridge	Y	18
"	9:30 am	Know Your Invasive Plants		22	"	3/4 day	Raptors on the Move at Waggoner's Gap	Y	18
"	10 am	Master Gardener Plant Clinic		21	Oct 30	10 am	Geology at the Gettysburg Battlefield	Y	18
"	"	Snickers Gap Hawkwatch bird walk		23	"	2:30 pm	Fall Tree ID for Birders		18
Sep 19	9 am	On the Move at Cape May	Y	13	Nov 2	10 am	Midweek Meander Along the Canal E	Y	13
"	6 pm	Introduction to Ecology begins	Y	24	Nov 4	10 am	Fall Flora Friday - Little Bennett	Y	14
"	7 pm	Mammals begins	Y	24	Nov 5	8 am	Beginner Bird Walk at Woodend		20
Sep 20	7 pm	Intro to Water Quality Monitoring		22	"	8:30 am	Fall in the Parks - Mason Neck	Y	14
Sep 21	10 am	Woodend Master Plan Walk		13	"	9 am	Weekend Walks in the Woods		8
"	7 pm	Bird Life begins	Y	25	Nov 6	8:30 am	Eastern Neck NWR bird walk		23
Sep 22	7 pm	Birds of Prey begins	Y	25	"	9 am	Botanical Gems of MoCo: Black Hill	Y	18
Sep 24	7 am	Fall Birding Series B	Y	12	Nov 7	8:30 am	School's Out Nature Camp	Y	9

Date	Time	Activity	Fee	Page	Date	Time	Activity	Fee	Page
"	8 am	Beginner Bird Walk at Woodend		20	Nov 8	8:30 am	School's Out Nature Camp	Y	9
"	9 am	Georgetown Geology Loop Hike	Y	13	Nov 11	10 am	Art and Nature Journaling	Y	18
"	9:30 am	Intro to WQM Field Workshop		13	Nov 12	8 am	Beginner Bird Walk at Woodend		20
"	10 am	Master Gardener Plant Clinic		21	"	"	Blue Mash Nature Trail bird walk		23
"	10:30 am	Creek Critters in Antietam Creek		13	Nov 16	10 am	Fall Hike on Sugarloaf Mountain	Y	19
Sep 25	10 am	Fall Botany at Gunpowder Falls State Park	Y	14	Nov 17	7:30 pm	Bird ID Series: Waterfowl	Y	19
Sep 26	10 am	Fresh Air Kids at Algonkian begins	Y	11	Nov 19	7:45 am	Mattawoman Wildlands bird walk		23
Sep 27	7 pm	How to Read Your Stream		22	"	8 am	Beginner Bird Walk at Woodend		20
Sep 28	7:30 am	Woodbridge/Occoquan Bay bird walk		23	"	9 am	Knock, Knock		19
"	10 am	Midweek Meander Along the Canal B	Y	13	Nov 20	9:30 am	Chesapeake Wetlands	Y	19
Sep 29	7:30 pm	Author Lecture - DDT Wars		28	Nov 26	8 am	Beginner Bird Walk at Woodend		20
Sep 30	10 am	Fresh Air Kids at Rust begins	Y	11	Nov 30	7:30 am	Woodbridge/Occoquan Bay bird walk		23
Oct 1	7:30 am	Swains Lock bird walk		23	"	10 am	Midweek Meander Along the Canal F	Y	13
"	8 am	Beginner Bird Walk at Woodend		20	Dec 3	8 am	Beginner Bird Walk at Woodend		20
"	8:30 am	Late Season Wildflowers	Y	14	"	8:30 am	Winter Birding at Black Hill	Y	19
"	9 am	Woodend Master Plan Walk		13	"	9 am	Weekend Walks in the Woods		8
"	"	Weekend Walks in the Woods		8	"	1 pm	Building Stones of Pennsylvania Avenue	Y	19
Oct 2	7:30 am	Fall Birding Series C	Y	12	Dec 4	9 am	Birding the Shenandoah	Y	20
Oct 3	8:30 am	School's Out Nature Camp	Y	9	Dec 8	7 pm	Winter Birding Lecture Series A		20
Oct 5	10 am	Midweek Meander Along the Canal C	Y	13	Dec 9	10 am	Winter Weeds	Y	20
Oct 6	7 pm	Window into the World of Fungi		14	Dec 10	TBA	ANS Holiday Party	Y	28
Oct 7	10 am	Fall Flora Friday - Scott's Run	Y	14	Dec 11	8 am	Huntley Meadows bird walk		23
Oct 8	8 am	Beginner Bird Walk at Woodend		20	Dec 21	7:30 am	Woodbridge/Occoquan Bay bird walk		23
"	10 am	Fall in the Parks - Battle Creek Cypress	Y	14	<b>Y = Fee-based program</b> <ul style="list-style-type: none"> <li><span style="color: blue;">●</span> Special Event</li> <li><span style="color: green;">●</span> Children and Family Program</li> <li><span style="color: purple;">●</span> Adult Program</li> <li><span style="color: orange;">●</span> Natural History Field Studies</li> <li><span style="color: teal;">●</span> Rust (VA) Activities and Events</li> </ul>				
Oct 12	8:30 am	School's Out Nature Camp	Y	9					
Oct 14	10 am	Intro to Tree Identification	Y	15					
Oct 15	7:30 am	Fall Birding Series D	Y	12					

## Raptors on the Move at Waggoner's Gap

Saturday, October 29 (3/4 day field trip)  
 Leaders: Liam and Laura McGranaghan  
 Members \$30; nonmembers \$42

Fall brings thousands of migrating raptors—hawks, falcons, eagles, and their allies—to the Appalachian ridges and Atlantic coast. Our field trip goes to one of the premier hawk-watching sites in the area: Pennsylvania's Waggoner's Gap, about a 2.5-hour drive from DC. Our experienced leaders, known for their raptor expertise, will help you develop your own ID skills for these birds-on-the-move. *Getting to the hawk watch lookout requires walking up a short but rocky trail to an outcropping of perched boulders.*

## A Year at Boundary Bridge

Section D: Saturday, October 29 (9 am-2 pm)  
 Leader: Melanie Choukas-Bradley  
 Members \$34; nonmembers \$46

Autumn is glorious in Rock Creek Park, and we'll conclude our 10th series with a walk through colorful oaks, maples, and ashes, searching for the flowers of an early witch hazel in bloom. Our 2.5 mile circuit hike will be on trails with moderate uphill and downhill walking. Our leader is the author of the award-winning *A Year in Rock Creek Park: the Wild, Wooded Heart of Washington, DC. An ANS/Rock Creek Conservancy Partnership.*

## Fall Tree ID for Birders

Sunday, October 30 (2:30-4 pm)  
 Leader: Stephanie Mason  
 Free, but registration required.

FULL - Register for waitlist online

FREE

**THE BIRDER'S SOURCE!**

We stock 100+ models of birding-worthy optics from:  
**LEICA, ZEISS, SWAROVSKI, MEOPTA  
 KOWA, OPTICRON, PENTAX, KRUGER,  
 VORTEX, ZEN-RAY, MINOX, NIKON, ALPEN  
 CELESTRON, VANGUARD, & CARSON.**



*Come explore!* Open M-F 10-5, Sat. & Sun. 10-5

**ONE GOOD TERN**

Birding and nature shop - Gifts with a natural flair - Since 1986  
 1710 Fern Street, Alexandria, VA (near 395 & King Street.)  
 703-820-8376 ~ www.onegoodtern.com

## Geology of the Gettysburg Battlefield

Sunday, October 30 (10 am-3pm)  
 Leader: Joe Marx  
 Members \$30; nonmembers \$42

Although geology in 1863 was an immature science and military geology had not yet been invented, the terrain of southern Pennsylvania directly influenced the strategies and actions of the Union and Confederate armies in their climactic clash at Gettysburg. We will tour the battlefield by car and on foot, visiting a number of sites that reveal the geologic processes and materials that created the landscape. In addition, we will discuss several of the regional topographic features that funneled the two armies to their meeting place. We will do several short and relatively easy circuit hikes, totaling a couple of miles in both open and wooded terrain. The ground will vary from dusty or muddy to rocky, and from level to relatively steep. *Note: The pace on our geology hikes is faster than the usual "naturalists' shuffle."*

## Botanical Gems in Montgomery County: Black Hill Regional Park

Sunday, November 6 (9 am-12:30 pm)  
 Leader: Carole Bergmann  
 Members \$24; nonmembers \$34

Designated one of Montgomery Parks Best Natural Areas, Black Hill Regional Park near Boyds offers plant enthusiasts a number of special habitats to explore. The county's forest ecologist will lead us on a loop hike (between 2-3 miles) to visit some of these, such as: lakeside; early succession meadows; high-quality, chestnut oak-dominated forests; mixed oak forests; and tulip tree-dominated forests. We'll ID plants along the way, focusing on their seasonal aspects and ecological niches.

## Art and Nature Journaling

Friday, November 11 (10 am-2:30 pm)  
 Leader: Tina Thieme Brown  
 Members \$24; nonmembers \$34

Create an art journal page following a walk at our Woodend Sanctuary under the guidance of the artist of two Sugarloaf Mountain books and the Illustrated Agricultural Reserve Map. We'll spend some time outside looking closely at nature, and then gather indoors where we will share observations of several native tree specimens. Tina will demonstrate how to create a journal page using sketches and handwritten notes to describe a walk in the woods. After showing you her sketchbooks, introducing you to her favorite journaling art supplies and guiding you through a sketch, you will be on your way to creating seasonal impressions from your walks in nature and an art journal page to take home with you. Our leader says the only experience required is a love for our native trees. An art supply list (approx. \$20) will be provided with your confirmation letter.

## Fall Hike on Sugarloaf Mountain

Wednesday, November 16 (10 am-3 pm)  
 Leaders: Melanie Choukas-Bradley and  
 Tina Thieme Brown  
 Members \$34; Nonmembers \$48

The author and the artist on two books about Sugarloaf Mountain team up once again for a seasonal nature hike on our local monadnock. We'll explore the preserve's botany, wildlife, geology, and history while covering 2-2.5 miles. We'll search for late-season wildflowers and the maturing fruits of oaks, hickories, black birch and other woody plants. Fall color should be lingering, and witch hazel just coming into bloom. Our ears will be open for the sounds of wildlife, including Ravens, Eastern Towhees, and active Chipmunks. During lunch, Tina will offer pointers on drawing in the field. *Our hike includes uphill/downhill walking over rocky trails and a fairly steep ¼ mile hike up to the summit—all at a leisurely pace.*

## Bird ID Series: Waterfowl

Thursday, November 17 (7:30-9:30 pm)  
 Sunday, November 20 (3/4 day field trip)  
 Leader: Mike Bowen  
 Members \$46; nonmembers \$64  
 Lecture only \$20/\$28

Late fall signals the arrival of thousands of ducks and geese into the mid-Atlantic region. On Thursday evening, our leader will use an illustrated presentation to cover size, shape, plumages, habitat, and behaviors of the most common species in our area. On our field trip, we'll visit several prime waterfowl areas, which will be chosen closer to the date of the workshop based on the pace of migration. This workshop is aimed at beginning and mid-level birders, but all are welcome.

## Knock, Knock

Saturday, November 19 (9-11:30 am)  
 Leaders: Pam and Chris Oves  
 Free, but registration required.

**FREE**



On this approximately 4-mile roundtrip bird walk along the Canal's towpath at Riley's Lock, we'll work to see or at least hear all 7 species of woodpeckers (a grand-slam!) that frequent our woods this time of year. Our walk is aimed at beginning birders, but all are welcome. *This walk will go faster and farther than our usual "naturalist's shuffle."*

## Chesapeake Wetlands

Sunday, November 20 (9:30 am-5:30 pm)  
 Leaders: Hal Wierenga and Lynn Davidson  
 Members \$34; nonmembers \$48

Discover the richness of autumn birding in the wetlands that line the Chesapeake Bay's Eastern Shore with birders who know the area well. We'll meet at the Blackwater Natural Wildlife Refuge, south of Cambridge, MD, about a 2-hour drive from Washington. After a leisurely visit to Blackwater, we'll visit other wetlands in Dorchester and Talbot counties searching for migrant waterfowl, raptors, sparrows, and other seasonal birds.

## Building Stones of Pennsylvania Avenue

Saturday, December 3 (1-4:30 pm)  
 Leader: Joe Marx  
 Members \$24; nonmembers \$34

The buildings and monuments along the Avenue of the Presidents are faced with a variety of granites, marbles, and sandstones. We will start at the Federal Triangle Metro station and walk about 3 miles, examining the exteriors of various structures between the White House and the Capitol. We will discuss the geology and place of origin of the building stones, as well as explore aspects of political, cultural, and economic history related to the choice and use of material. All portions of our route will be paved. *The pace set and distance covered on this geology field trip will be faster and farther than our usual "naturalist's shuffle."*

## Winter Birding at Black Hill

Section A: Saturday, December 3 (8:30-11 am)  
 Section B: Sunday, January 8 (8:30-11 am)  
 Section C: Saturday, February 4 (8:30-11 am)  
 Section D: Sunday, March 5 (8:30-11 am)  
 Leader: Mark England  
 Each walk: members \$20; nonmembers \$28  
 Entire series \$72/\$104

The winter months can be an ideal time to learn more about birds and birding, and Black Hill Regional Park, in upper Montgomery County, is an ideal outdoor classroom for this study. Each walk in our series, intended for beginning to mid-level birders, will visit one or more sites in the Park in a search for waterfowl, sparrows, raptors, and other both resident and overwintering species. The Park's habitats are varied and include wetlands and Little Seneca Lake, as well as forest and field. Join us for the entire series and observe the seasonal changes in numbers and species, or just sign up for individual walks.



FOLLOW ANS ON TWITTER: ANStweets



## Birding the Shenandoah Valley

Sunday, December 4 (9 am-4 pm)

Leaders: Joe Coleman and Laura McGranaghan  
Members (ANS & LWC) \$34; nonmembers \$48

Clarke County in Virginia's Shenandoah Valley is rich with excellent birding areas. Join two seasoned birders on a daylong search for hawks, sparrows, waterfowl, and other seasonal birds in the northeastern section of the Valley. We'll meet at the Snicker's Gap Hawkwatch in the Blue Ridge Mountains on the Loudoun/Clarke County border. From here we'll move along the Shenandoah River, and visit the Virginia State Arboretum and Blandly Farm. We'll wrap up the day with a return to Snicker's Gap Hawkwatch to see what's moving overhead. All levels of birders are welcome, and we will carpool/caravan from our meeting point to the return. Our field trip is cosponsored with Loudoun Wildlife Conservancy (LWC).

## Winter Birding Lecture Series

FREE

Thursdays (7-9 pm)

A: December 8 - Introduction to Winter Birding & Winter Bird Feeding

B: January 12 - How Birds Survive in the Wild in Winter

C: January 26 - Where Our Breeding Birds Go in the Winter

D: February 9 - Wintering Waterfowl and the Chesapeake Bay

Leader: Don Messersmith

Free, but registration required for each session.

World traveler, local ornithologist, and beloved instructor Don Messersmith has retired from the Natural History Field Studies program. But don't fret. He's still eager to share his knowledge, his experiences, and his sense of humor, so we've booked him for a lecture series on winter birding. Join him for one or more of these evenings at Woodend to learn more about winter bird ID and ecology.

## Winter Weeds

Friday, December 9 (10 am-2:30 pm)

Leader: Stephanie Mason

Members \$24; nonmembers \$34

Not all herbaceous plants disappear in the winter. Many persist as dried stalks and seed clusters, with a beauty to match the season. Join ANS Senior Naturalist Stephanie Mason for an indoor/outdoor introduction to winter weed and wildflower identification at our Woodend Sanctuary. We'll also investigate seed dispersal strategies and examine plant skeletons for signs of summer insect activity, such as insect galls, chrysalids, cocoons, and egg cases.

## Winter Hikes in the Mountains

A: Saturday, January 7 (full day hike) - Sugarloaf Mountain, MD (4-5.5 mi)

Leader: Stephanie Mason

B: Sunday, February 5 (full day hike) -Thompson Wildlife Management Area, VA (4-5 mi)

Leader: Stephanie Mason

Hike A: Members \$34; nonmembers: \$48

Hike B: Members \$34; nonmembers: \$48

Take on two of your New Year's resolutions at once: spend more time exploring nature AND get more exercise by signing up for one or both of our hikes in the nearby mountains of our area. We'll search for over-wintering birds and other wildlife, while practicing our winter botany skills. Hike A covers our nearest monadnock, where we'll scale the fairly steep ¼ mile trail to the summit (1,282 feet), then spend the rest of our time hiking the 5-mile loop Blue Trail. On Hike B, we'll visit the rocky woods of Thompson Wildlife Management Area, best known for its spring display of trillium, where we'll follow the Appalachian Trail for a stretch of our explorations. *Note: These hikes are designed to offer a natural history experience for persons who want to move farther and faster than the pace of most ANS field trips. We will stop to observe natural phenomena, but will keep a pace necessary to cover the distance stated. All of these hikes should be considered moderately strenuous, with both uphill and downhill hiking over rocky and uneven trails. Hike distance and exact location may be changed due to ground conditions and weather.*

## Winter Walks Along the Canal

Wednesdays (10 am-12:30 pm)

Section A: January 11 - Carderock

Section B: January 25 - Widewater

Section C: February 8 - Swain's Lock

Section D: March 8 - Great Falls

Leader: Stephanie Mason

Each walk: members \$20; nonmembers \$28

Entire series \$72/\$100

Join our Senior Naturalist for one or all of these walks along the C&O Canal as we look for over-wintering birds and other wildlife, practice winter botany skills, and enjoy the expansive views along the Potomac River that this season provides. Carpooling will be available from Woodend.

## Free Beginner's Bird Walks Saturdays, 8-9 a.m. at Woodend

Weekly walks resume in September. Monthly walks December-February. Meet at the Audubon Naturalist Shop parking lot. Bring binoculars or use ours.

Register at <https://ansevents.eventsmart.com>.

## New Year's Moonwalk

Saturday, January 14 (6:30-8:30 pm)

Leader: Stephanie Mason

Members \$20; nonmembers \$28

Cross your fingers for clear skies as we celebrate the New Year with a brisk walk under the light of the year's first full moon. We'll head upriver on the C&O Canal towpath from Swain's Lock, enjoying the shadows of arching sycamore trees and listening for the calls of owls and winter-active mammals. Distance covered will depend on the weather and conditions underfoot.

## Winter Waterfowl Prowl

Sunday, January 15 (8 am-12:30 pm)

Leader: Mike Bowen

Members \$24; nonmembers \$34

Early in the year is the best time to search for and learn to ID overwintering waterfowl in our area. Basing our search at wetlands and waterways relatively close-in to the metro area, we'll visit sites in or near the District, Northern Virginia, or Montgomery County. Our exact locations will be determined closer to the date of the field trip, based on our leader's scouting expeditions. While our focus will be waterfowl, we'll keep an eye open for all birdlife. All levels of birders welcome.

## Winter Birding at Oaks Landfill

A: Sunday, January 22 (3-5:30 pm)

B: Sunday, February 12 (3:30-6 pm)

Leader: Mark England

Each walk members \$20; nonmembers \$28

You'll want to bundle up for these birding treks to the now-closed landfill adjacent to the Blue Mash Nature Trail, a familiar birding spot in upper Montgomery County. As afternoon fades to dusk in the open terrain here, we'll search for resident and overwintering species, including Northern Harriers and Short-eared Owls. Our leader will bring along a scope for distant bird viewing. Our visit to this area which is "closed to the public" is by special permission.

## WEEKLY PLANT CLINIC

Master Gardeners have a "help desk" outside Woodend's Naturalist Shop on Saturdays, 10 am-Noon, April through September. Bring your plant/insect specimens and learn more about gardening!



## Introduction to the Winter Night Sky

Thursday, January 26 (7:30-9:30 pm)

Leader: Richard Orr

Members \$20; nonmembers \$28

Can you spot Orion the hunter rising up just over the treetops? This alone is a sure sign that winter has come once again to the northern hemisphere. Being able to read the sky in winter can give you a unique sense of cosmological wonder since most of the brighter stars are, in fact, winter stars. While our leader is best-known for his expertise in dragonflies, he'll share his equally strong knowledge of astronomy in an indoor/outdoor presentation at our Woodend Sanctuary. We'll be introduced to sky guideposts and the dozen or so "winter" constellations. Assuming skies are clear, we'll bundle up to head outside and look for some of these wondrous celestial sights through a telescope.

## Winter Tree ID for Birders

Saturday, January 28 (2:30-4 pm)

Leader: Stephanie Mason

Free, but registration required.

FREE

We're reprising this popular field trip to help birders learn to recognize the field marks of many common trees through binoculars. The outdoor classroom will be Scott's Run Nature Preserve near McLean, VA, where we'll ID trees in their winter aspect, all the while keeping our eyes and ears open for birds moving amongst them.

## Walk Among the Giants

A. Saturday, January 28 (9 am-1 pm)

B. Saturday, April 15 (8 am-Noon)

C. Sunday, July 23 (8 am-Noon)

D. Sunday, October 22 (8 am-Noon)

Leader: Stephanie Mason

Each walk members \$24; nonmembers \$34

Entire series \$86/\$122

Walk among the giant Sycamores, Oaks, and River Birches on this seasonal series of explorations along the Potomac River just upstream of Great Falls, MD. We'll keep our eyes and ears open for all manner of wildlife, and watch the winter woods turn green, and then summer sultry before fall colors herald the coming of another winter. Our floodplain trail, connecting with the Towpath, is mostly level, but could be muddy as we walk our loop of roughly 2.5 miles.

# Water Quality Monitoring

Classes are for anyone who would like to become a volunteer stream monitor or who simply has an interest in learning about life in our streams. Classes are free to ANS members. **Register online at [www.anshome.org](http://www.anshome.org) as part of the adult foray program registration process.** To learn more about becoming a monitor, contact Cathy Wiss at [cathy.wiss@anshome.org](mailto:cathy.wiss@anshome.org) or call 301-652-9188 x19.

## Know Your Invasive Plants

Woodend Sanctuary (Teale), Chevy Chase, MD  
 Saturday, September 17 (9:30 am-noon)  
 Fee \$12, waived for members and students earning SSL credit



Invasive plants that kill or bring down mature trees can seriously alter stream health and ecosystem function. Volunteer Master Naturalist Diyan Rahaman will help you identify non-native invasive plants at Woodend and in nearby Rock Creek Park. Registration required. An ANS/Rock Creek Conservancy Partnership. Register online.

## Introduction to Water Quality Monitoring



Find out about monitoring with ANS! The classroom session and the field workshop are recommended for those interested in becoming monitors.

### Classroom Session

Woodend Sanctuary, Chevy Chase, MD  
 Tuesday, September 20 (7-9 pm)  
 Fee \$12, waived for members and students earning SSL credit

In the classroom, we will explore how benthic macroinvertebrates – bottom-dwelling boneless creatures – help us assess the health of local streams and learn how to identify these organisms to the taxonomic level of order by examining preserved specimens. Registration required.

### Field Workshop

Saturday, September 24 (9:30 am-12:30 pm) siteTBA  
 Fee \$12, waived for members and students earning SSL credit

In the field workshop, we will visit a stream to practice monitoring techniques and then collect and identify the macroinvertebrates we find. Registration required.

## Save the Date

**ANS Annual Meeting**  
**Thursday, October 20, 6-9 pm**



FRIEND ANS ON FACEBOOK

## Creek Critters in Antietam Creek



Saturday, September 24 (10:30 am-12:30 pm)  
 Leaders: Gregg Trilling and Sandy Brown (AFF)  
 Free, but registration required.

Looking for a fun activity for National Public Lands Day? Join ANS and our partner The Alice Ferguson Foundation as we search for critters living in Antietam Creek. We'll use the Creek Critters app to identify macroinvertebrates and to create stream health reports. This is a great opportunity to search for critters we don't find in degraded streams closer to Woodend Sanctuary. We'll work in shallow water near the Newcomer House on the eastern edge of Antietam National Battlefield. Children over 10 years old are welcome to participate with an adult. Carpooling will be available from Woodend Sanctuary.



Photo by Gregg Trilling

## How to Read Your Stream



Woodend Sanctuary, Chevy Chase, MD  
 Tuesday, September 27 (7-9:30 pm)  
 Fee \$12, waived for members and students earning SSL credit

Learn about stream characteristics and dynamics. Find out how land use affects our streams. We will practice evaluating stream conditions using photographs and the habitat assessment forms that monitors fill out in the field. This class is recommended for anyone who plans to participate in the ANS water quality monitoring program and is a good refresher on habitat assessment for experienced monitors. Registration required.

# Free Birding Trips September-December

These free, volunteer-led walks offer birders a chance to explore new areas with other birding enthusiasts. Visit ANSHome.org, then go to Nature Activities & Education/Adults for complete directions, additional trips, and more information. Turn to page 12 for the list of fee-based, instructional classes and field trips for beginning to mid-level birders.

## SEPTEMBER

**Sunday, September 4**

**Sycamore Landing and Hughes Hollow, MD**

Half day. Early migrant songbirds; some raptors, waterfowl, and migrating butterflies. **Meet time/place:** 8 am at the Sycamore Landing parking lot by the C&O Canal. Easy walking trail. For more information, contact leader: Tony Futcher, 301-422-3927 or tonyfutcher1@verizon.net.

**Saturday, September 10**

**Patuxent River Park, Jug Bay Natural Area, Prince George's Co., MD**

Half day. Joint trip with MBC/MOS. Driftboat on Patuxent River followed by trail walk. Search for Sora, also migrant and resident songbirds and waterbirds. **Meet time/place:** 6:30 am at park entrance gate. Bring fee of \$6 per person for park program; boat trip can be cool and a bit damp. Leaders: Greg Kearns and John Bjerke. **Make reservation** (15-person limit) with John Bjerke, johnbjerke1@mac.com or 240-401-1643.

**Saturday, September 17**

**Snickers Gap Hawkwatch (between Bluemont & Berryville, VA)**

Two-thirds day. Joint trip with MBC/MOS. Peak time for Broad-winged Hawks. **Meet time/place:** 10 am. Meet at the hawkwatch, a commuter parking lot at VA 7 and VA 601. **Make reservation** with leaders Joan Boudreau and Bob Abrams at icepeep@aol.com or 703-734-1238 (home). Bring tripods, scopes, chairs, pack lunch, and rain/wind gear.

**Wednesday, September 28**

**Woodbridge/Occoquan Bay NWR, VA**

Half day. Songbirds, waterfowl, eagles, and other raptors. **Meet time/place:** 7:30 am inside the refuge at central parking lot. **Make reservation** (6-adult limit) with leader Judy Gallagher at 703-490-5363 (home) or 703-975-3069 (cell).

## OCTOBER

**Saturday, October 1**

**Swains Lock, C&O Canal, Montgomery County, MD**

Half day. Late songbird migrants, resident songbirds, herons, raptors, and some waterbirds. **Meet time/place:** 7:30 am at Swains Lock on the C&O Canal. **Make reservation** (10-person limit) with leader Janet Dale, 240-426-0054 or jkdale1@earthlink.net.

**Sunday, October 16**

**Meadowside Nature Center, Rockville**

Half day. Late songbird migrants and resident songbirds in varied habitat. **Meet time/place:** 7:30 am at the Nature Center parking lot on Meadowside Lane, off Muncaster Mill Road. **Make reservation** (10-person limit) with leader Marc Liebermann at mdlieberm@gmail.com.

**Wednesday, October 26**

**Woodbridge/Occoquan Bay NWR, VA.**

Half day. Songbirds, waterfowl, eagles, and other raptors.

**Meet time/place:** 7:30 am inside the refuge at central parking lot. **Make reservation** (6-adult limit) with leader Jim Waggener, 703-567-3555.

## NOVEMBER

**Sunday, November 6**

**Eastern Neck NWR, Kent County, MD**

Full day. Expect to finish around 2:30 pm. Good variety of waterfowl, some waterbirds, gulls, and terns as well as landbirds, hawks, and eagles in mixed farm, woodland, pond, and bay areas. Bring pack lunch and warm drinks. **Meet time/place:** 8:30 am at the Tundra Swan Boardwalk. **Make reservation** (15-person limit) with leader Paul DeAnna before 11/3 at ppdeanna47@gmail.com or 202-544-2680.

**Saturday, November 12**

**Blue Mash Nature Trail, Montgomery County, MD**

One-third day. Hawks, sparrows, finches, and other woodland birds. **Meet time/place:** 8 am at Zion Road parking lot. Waterproof footwear strongly recommended. **Make reservation** (10-person limit) with leaders Len Bisson and Lisa Norwalk at lhnorwalk@gmail.com.

**Saturday, November 19**

**Mattawoman Wildlands, Marbury, Charles County, MD**

Half day. Joint trip with SoMD Audubon. Large concentrations of waterfowl on the Mattawoman Creek, along with songbirds, woodpeckers (some red-headed), and raptors. **Meet time/place:** 7:45 am at Lackey High School parking lot, 3000 Chicamuxen Rd, Indian Head, MD 20640. Bring waterproof shoes or low boots, and dress for possible wind. Be prepared for one-mile walk to and from the head of the trail and then a half-mile walk on uneven forest trail. **Make reservation** (10-person limit) with leader Lynne Wheeler at comstockel@aol.com or 301-751-8097. Bob Lukinik will co-lead.

**Wednesday, November 30**

**Woodbridge/Occoquan Bay NWR, VA**

See October 26 listing for details.

## DECEMBER

**Sunday, December 11**

**Huntley Meadows, Fairfax County, VA**

Half day. Wintering waterfowl and other winter residents, Bald Eagles a possibility. **Meet time/place:** 8 am at parking lot.

**Make reservation** (12-person limit) with leader Stephen Jones at srjones1111@aol.com or 301-320-3518.

**Wednesday December 21**

**Woodbridge/Occoquan Bay NWR, VA**

See October 26 listing for details.

# Natural History Field Studies



This popular program, cosponsored by the Audubon Naturalist Society and the Graduate School USA, provides a comprehensive and stimulating view of our region's natural history and conservation issues. Taught at the college freshman level, these courses are open to anyone 18 years of age or older, professionals and amateurs alike. A Certificate of Accomplishment is awarded for completion of a required curriculum of 39 Continuing Education Credits (CEUs).

Classes are offered at several locations around the DC metro area, including the Audubon Naturalist Society's Woodend Sanctuary in Chevy Chase, MD, and nature centers and other locations in Virginia, as well as the Capital Gallery in downtown DC, which is Metro accessible. For a complete list of the classes in the NHFS program, plus instructor bios, visit ANShome.org/NHFS.

## Mammals

NATH 8290E, 3 CEUs

Class night and time: Mondays, 7-9:15 pm

Class meetings: September 19-November 21

Field Trip dates: October 15, November 5

Location: Woodend Sanctuary, MD

Tuition: \$365

Instructor: Kerry Wixted



Photo courtesy of USFWS

Examine the characteristics, physiology, adaptations, ecology and behavior of mammals with emphasis on species of the mid-Atlantic region. Studies will include identification through analysis of

skulls, study skins, tracks, and other signs commonly found in natural areas. Field trips will include nocturnal and diurnal observation of wild mammals in their natural habitats.

## Introduction to Ecology

NATH1160E, 2 credits

Class night and time: Mondays, 6-8 pm

Class meetings: September 19-November 28

Field Trip dates: October 22, November 12

Location: Capital Gallery, DC (L'Enfant Metro)

Tuition: \$365

Instructor: Amanda Rose Newton

A fundamental understanding of ecology and the physical and biological principles on which ecosystems depend is essential for any naturalist. In this course students learn to interpret the patterns and processes of nature by studying energy flow, food webs, biogeochemical cycles, population dynamics, communities, behavioral and evolutionary ecology, biodiversity, biomes and plant/animal interactions. A previous course in biology is strongly recommended. ACE College Credit Recommendation Service Reviewed.

## Fall Woody Plant Identification

NATH7145E, 3 CEUs

Class night and time: Tuesdays, 6-8 pm

Class meetings: September 13-November 15

Field Trip dates: September 24, October 15 and 29

Location: Capital Gallery, DC (L'Enfant Metro)

Tuition: \$365

Instructor: Emily Ferguson

As summer fades and fall colors emerge, do you wonder which trees contribute to the kaleidoscope brightening our environment? Now's the time to take another item off of your 'to do' list and learn to identify the trees surrounding you. Participants will study the major woody plant families and species found in the Mid-Atlantic's forest communities. Field trips feature the use of recognition characteristics and botanical keys to identify many local woody plants. Students should have a 10x hand lens. There will be no class on September 20.



Photo by Jacky Wershbale

*On July 21, friends, students, and family joined ANS in recognizing the nearly 90 years of teaching in the Natural History Field Studies program by Don Messersmith and Jane Huff. This year marked the 53rd year for Messersmith who, while retiring from the NHFS program, will still be teaching a 4-session Winter Birding series on Thursday nights at Woodend. It's the 36th year of teaching for Jane Huff, who will continue to deliver her favorite NHFS classes, including Understanding Evolution in the winter term. Students shared stories of being inspired, challenged, and enlightened by both instructors.*

# Fall Courses September-November

## Bird Life

NATH7115E, 3 CEUs

Class night and time: Wednesdays, 7-9 pm

Class meetings: September 21-November 23

Field Trip dates: October 1 and 22, and November 19

Location: Woodend Sanctuary, MD

Tuition: \$365

Instructor: Mark England

Study the life histories and ecology of resident and migrant birds of the Central Atlantic region. Emphasis is on birding techniques, use of field guides, introduction to birdsong, and identification of our area's birds. Bird forms and adaptations, habitats, plumage, migration, and conservation are also covered. The course features a field trip to Blackwater National Wildlife Refuge in Maryland as well as two other field trips.

## The Living Soil

NATH1175E, 2 credits

Class night and time: Wednesdays, 7-9 pm

Class meetings: September 14-November 23

Field Trip dates: October 1 and 22, and November 12

Location: Woodend Sanctuary, MD

Tuition: \$365

Instructor: Joel Cohen

Knowledge of soils is basic to understanding plant communities and ecosystems. Examine the nature of soils and the ways they affect their local environment. Learn the structure, properties, nutrient supply, and classification of soils and the significance of these factors to plant growth and other uses. Discover the biodiversity of life in the soil, experience hands-on labs on soil groups and soil properties. Field trips to natural land resource areas of the Central Atlantic region. Previous courses in wetlands and biology are helpful. There will be no class on Oct. 12. ACE College Credit Recommendation Service Reviewed.

## Birds of Prey

NATH7155E, 3 CEUs

Class night and time: Thursdays, 7-9 pm

Class meetings: September 22-November 17

Field Trip dates: October 8 (Cape May), November 5 (Waggoner's Gap), and one TBD

Location: Oakton High School, VA

Tuition: \$365

Instructor: Liam McGranaghan

Experience the wonder of the fall raptor migration and learn to identify raptors in flight. Study habitat requirements of birds of prey and their relationships to other species. This course will concentrate on species typically found in eastern North America but will also cover additional selected species. Three field trips are planned, with one to Cape May, one to Waggoner's Gap and one TBD.

*Find details on Winter NHFS classes, starting in January, at ANShome.org/NHFS*

## Owls

Tuesdays, Hidden Oaks Nature Center, VA

Instructor: Leon Nawojchik

## Understanding Evolution

Tuesdays, Woodend Sanctuary, MD

Instructor: Jane Huff

## Land-Use Principles

Wednesdays, Woodend Sanctuary, MD

Instructor: Katherine Nelson

## Human Ecology

Wednesdays, Woodend Sanctuary, MD

Instructor: Gogi Kalka

## Geology

Thursdays, Capital Gallery, DC (L'Enfant Metro)

Instructor: Joe Marx

## Registration Info for Natural History Field Studies Classes

Experience gained on field trips is essential to these courses, so students should not register for classes when field trips overlap.

Registration may be completed:

- in person at the Grad School Registrar's Office, 8 am-7 pm, Monday-Friday
- online at [graduateschool.edu](http://graduateschool.edu)
- by phone at 202-314-3300 or toll-free at 888-744-GRAD
- by FAX: 866-329-4723
- by mail: Registrar's office, Suite 120, 600 Maryland Ave. SW, Washington, DC 20024

## BOOKSHOP OPEN!

Our Sanctuary Shop will be open 30 minutes prior to the first night of classes at Woodend. Students can buy books and other items at a 20% discount! We usually carry textbooks for classes, but call 301-652-3606 to confirm.

AUDUBON NATURALIST SOCIETY

# Nature Travel

*Discover a new world!*

ANS's Nature Travel program offers our members and friends opportunities to search for wildlife and explore the wonders of nature at places outside the mid-Atlantic region. Group size is typically limited to 15 people, and many trips fill early. Call Carol Hayes at the ANS travel desk at 301-652-9188 x10 or email [carol.hayes@anshome.org](mailto:carol.hayes@anshome.org) for complete itineraries and registration information or visit [ANSHome.org/travel](http://ANSHome.org/travel).

## Panama: A Week at the Iconic Canopy Tower **FULL**

November 9-16, 2016

Optional extension to November 20, 2016

Leaders: Stephanie Mason & Carlos Bethancourt

We're returning to the former U.S. Military facility that has been ingeniously transformed into an ecotourism and birding lodge called the Canopy Tower. The Tower is located in the Canal Zone, which for many years was U.S. territory and left undeveloped. Today, most of this land is protected as a Panamanian National Park, and the variety of birds and other tropical wildlife found here is overwhelming. We'll spend a week at the tower, with an optional extension to the Canopy Lodge. While we're sure to see a great variety of birds, we'll also spend time observing and learning about plants, butterflies, mammals, reptiles, and other wildlife. **This trip is currently full. Call our travel office (301-652-9188, x10) to be put on a waitlist.**

## Costa Rica: A Trove of Tropical Birds—and More

February 14-26, 2017

Optional extension to March 1

Leaders: Stephanie Mason & Carlos "Charlie" Gomez

This will be our Senior Naturalist's 19th year as an ANS leader to this small, tropical wonderland with amazing plant and animal diversity. Our basic trip will visit moist Caribbean lowlands, vast Cano Negro wetlands, tropical dry forest in the northwest Pacific, and lush cloud forest habitat. Our optional extension moves to higher elevations, where tropical oaks grow tall and the Resplendent Quetzal nests. ANS members' cost for the basic trip is \$4050, double occupancy from San Jose. This fee includes almost all meals, several boat trips, and expert leadership.

## Free Beginner's Bird Walks Saturdays, 8-9 a.m. at Woodend

Weekly walks resume in September. Monthly walks December-February. Meet at the Audubon Naturalist Shop parking lot. Bring binoculars or use ours. Register at <https://ansevents.eventsmart.com>.

## Spain: Spring Bird Migration Across the Strait of Gibraltar

April 17-25, 2017

Stephen Daly & Terry Lawson Dunn

Southern Spain's Andalucía region is a birdwatcher's paradise that attracts bird enthusiasts and ornithologists year round. But the best time of year to see birds is during the spring, when many migrating birds from Africa overlap with species already wintering in Spain. The area is, in fact, one of two primary routes for migratory birds between Europe and Africa (the other one being Istanbul). The Straits of Gibraltar, in the Southernmost tip of Andalucía is a key point of passage for raptors, storks and other birds. On this special spring tour, we will cover a rich variety of landscapes and habitats from our base near Barbate, Spain. We will travel from the mouth of the Rio Guadalquivir in Huelva province's Atlantic coast, to the Rio Guadarranque which flows from the sierras to the Mediterranean, in the hopes of seeing many of the nearly 400 bird species that can be found near the Straits of Gibraltar. The region is also known for its stunning medieval architecture, castle fortresses, Moorish history, and of course, tapas and flamenco. Detailed itinerary and costs will be available soon.



White headed duck by Stephen Daly

## Pack Your Travel Protection!

Call 301-652-9188 x10 or purchase a plan online with our partner: [travelexinsurance.com](http://travelexinsurance.com) and use the ANS code **20-6029**.

## Galapagos Islands: Darwin's Wild Classroom

June 23-July 2, 2017

Leaders: Stephanie Mason, Michael O'Brien, Louise Zemaitis & local guides

A trip to Ecuador's Galapagos Islands is one of the world's greatest natural history excursions, and ANS is collaborating with industry leader Victor Emmanuel Nature Tours for our third trip to this fascinating archipelago. A pre-trip visit to the Tandapaya region of mainland Ecuador (June 20-23) and a post-trip extension to Machu Picchu (July 1-7) are also planned. Registration is underway for the basic trip, as well as the pre- and post-trip journeys. Contact our travel staff for a copy of the itinerary and instructions for enrolling in the trip. Prices per person vary, depending on the size and location of cabins on the boat.

## Washington's Olympic Peninsula

August 12-20, 2017

Leaders: Mark Garland & Neal Fitzpatrick



Photo by Mark S. Garland

The Olympic Peninsula, located in the northwestern corner of Washington state, is an area of remarkable natural beauty and biological diversity. Much of the land is protected as Olympic National Park, where leader Mark Garland worked as a Park Naturalist early in his career. Habitats range from the wild rocky coast of the Pacific Ocean to mountain meadows filled with summer wildflowers, located beneath a mix of rocky and snow-capped peaks. The

mountain slopes and valleys are home to half a million acres of magnificent old growth forest, where many of the trees are over 200 feet tall and more than 8 feet in diameter. Come explore this diverse landscape at the peak of summer and learn about birds, butterflies, trees, wildflowers, marine life, and more. Detailed itinerary and costs will be available soon.

## New Mexico: A Natural and Cultural Exploration

September 9-16, 2017

New Mexico is known as the land of enchantment, but it's also a land of great diversity -- diverse wildlife, diverse ecosystems influenced by a huge range of elevations and past geological events, diverse cultures where Native American and Spanish influences dominate, and a history that is unlike any other. Visiting New Mexico in September means catching the birds while they are migrating and the chile when it has just been roasted! Detailed itinerary and costs to follow.

## Crowder-Messersmith Conservation Fund News

The Crowder-Messersmith Conservation Fund is ANS' international outreach program, providing micro-grants for local conservation and education projects in developing countries. All grantees must:

- Protect endangered species & habitats
- Be ecologically sustainable
- Provide public education
- Have lasting significance to local residents

The 2016 grants were awarded to **Ghana** for a project engaging junior high students in marine turtle conservation; to **Cameroon** for a project addressing conflict between endangered African manatees and fishermen; and to a project in **Bhutan**, working with fungi collectors to protect medicinal fungi in the Himalayan alpine environment.

For more information on the Crowder-Messersmith Conservation Fund please see our web page at [ANShome.org/index.php/conservation/crowder-messersmith](http://ANShome.org/index.php/conservation/crowder-messersmith).

## Crowder-Messersmith Conservation Fund Annual Talk: 101 Great Birds From Around the World

Thursday, October 27 (7-9 pm)

Woodend Sanctuary

Featuring Mark Garland, popular ANS travel & foray leader

A celebration of the remarkable diversity of birds with a look at some of the extraordinary appearances, sounds, and behaviors found within the world of birds. Mark Garland coordinated the ANS travel program for 28 years, and most of the birds featured in this program were photographed on ANS programs. Mark will include stories about travel experiences throughout the talk. He was a student in Don Messersmith's ornithology and entomology courses at the University of Maryland during the late 1970s.

Light refreshments served. Please RSVP to Carol Hayes at [carol.hayes@anshome.org](mailto:carol.hayes@anshome.org) or 301-652-9188 x10 by October 24.



This ANS service offers weekly reports of sightings of rare or notable birds. Email [voice@ANShome.org](mailto:voice@ANShome.org) or visit [ANShome.org/voice](http://ANShome.org/voice).

## Your Holiday Party at Woodend Mansion

Photo by Ikona Photography



Does your company host an annual holiday party? Is your family too big for you to host a holiday celebration at home? End 2016 in grand style at Woodend, the ideal location to celebrate a successful year with employees and business partners, or with your loved ones.

A portion of the rental fee is considered a donation to the Audubon Naturalist Society, directly contributing to the mission of ANS, and is tax-deductible. Have your Holiday Party at Woodend mansion and feel good about it.

Woodend is conveniently located less than nine miles from The White House and just minutes off the Capital Beltway. Contact our Rental Events department to verify availability and reserve your date: woodendrentals@anshome.org.

Please support our mission by sharing this with your friends and colleagues. They too might want to end 2016 in grand style.

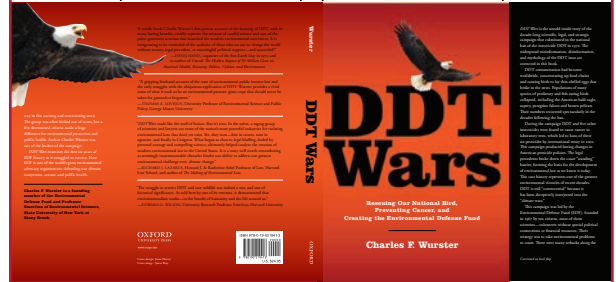


Thanks to the generosity of our supporters, ANS has a brand new Nature Bus. The 27-passenger bus will help us transport children to our nature sanctuaries for field trips. We've broken it in this summer for a few off-site camp trips.

## Author Lecture

### DDT Wars

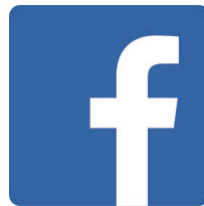
Thursday, September 29 (7:30-9 pm)  
Woodend Sanctuary, Chevy Chase, MD



*DDT Wars* is the untold inside story of the decade-long scientific, legal and strategic campaign that culminated in the national ban of the insecticide DDT in 1972. This case history represents one of the greatest environmental victories of recent decades. Join us on Thursday, September 29 for a talk entitled "DDT Ban: Greatest Conservation Accomplishment in Our Nation's History," by author **Charles Wurster**. Wurster was born and raised in Philadelphia, went to Haverford College, University of Delaware, and received a PhD in chemistry from Stanford University (1957). He is a lifelong birder, which got him interested in DDT.

Light refreshments served. RSVP to [pam.oves@anshome.org](mailto:pam.oves@anshome.org) or call 301-652-9188 x16 by September 26.

## New! Woodend Facebook Page



Check out [facebook.com/WoodendSanctuary](https://facebook.com/WoodendSanctuary) and give us a like. This new Facebook page is dedicated to current, past and potential wedding, social and corporate event clients.

"We're showcasing photos of events that take place at Woodend, articles and blogs where events at Woodend are featured and sharing other relevant content with readers," said ANS Manager of Rental Events Beatriz Engel.

If you're looking for a special event venue or know someone who is, tell them to check out Woodend Sanctuary – now on Facebook.

*We would like to thank  
Federal City Caterers  
for their in-kind donation  
in July.*

## Sneak Peek of New anshome.org

We have made some exciting progress this summer on the redesign of the ANS website, anshome.org.

As you know, we selected Seaberry Design & Communications in April to complete the comprehensive web redesign. Since then, we have:

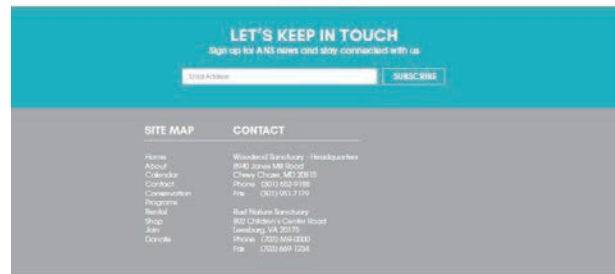
- Kicked off the project with ANS staff and the Programs Committee of the ANS Board;
- Collected feedback on the site via survey from ANS staff, Board, members and site users;
- Analyzed and shared web survey findings; and
- Established an internal web redesign committee to guide the site development.

From this discovery phase of the project we identified the following goals for our redesigned site:

- More prominently feature upcoming ANS nature programs, classes and events, and share other nature related events around the region;
- Make it easier to register for ANS nature programs, classes and events online;
- Offer a space online for ANS members, program participants and others to share nature findings, stories and photos; and
- Make it easier to join or make an online donation.

As you will see with the initial design direction pictured here, Seaberry has created a more visual design, which prominently features our nature programs and upcoming events. The redesign shows off the ANS brand, in its colors and with the use of our brand promise: Enjoy, Learn, Protect. Site navigation has been improved and simplified with navigation choices at the top, on the left and within pages.

As we move through the next phase of the project, site development, some of the new site's features will include: an ANS blog, online calendar, story collection functionality, photo gallery, searchable resource library and interactive maps. We anticipate completing the project and launching the new site late this fall, early-winter.



# Save the Date

## *ANS Holiday Party*

**Saturday, December 10**

Celebrate the holidays with friends and family at Woodend Nature Sanctuary.



Pick up a few gifts at our auction while enjoying the music, food and festivities.

Photo by Janice Browne



### *Rent Woodend Sanctuary*

beatriz.engel@anshome.org  
anshome.org/rentals

## Social Buzz

On Facebook, June 13: On June 8th ANS' GreenKids program served its 10,000th salad to the 2nd graders at Forest Knolls Elementary School in Silver Spring. In April, the second graders planted red leaf lettuce in raised garden beds in their courtyard. Since then they have been watering the plants, checking their outdoor weather station, and monitoring the growth in their salad garden journals. We have served thousands of salads to elementary school students in Montgomery County since 2011 and are so excited to hit this milestone!

- Montgomery Parks - Congrats on 10,000 salads; here's to many more!
- Joseph Andrews - Way to go!

On Twitter, June 8 - Hiking Along @hikingalongkids@ANS\_EE @ANStweets Example of Dedication to increasing environmental ed in DC. #edu #ee

Diane Lill@ANS\_EE

- What a glorious day to be harvesting our 10,000th bowl of salad from MCPS school gardens! @MCPSOutdoors



Join the conversation: [facebook.com/AudubonNaturalistSociety](https://www.facebook.com/AudubonNaturalistSociety) | [@ANStweets](https://twitter.com/ANStweets) on Twitter

AUDUBON NATURALIST SOCIETY'S

## Bloomin' Birdathon

### Thank You for Making the 36<sup>th</sup> Annual Bloomin' Birdathon a Wonderful Success!

Thank you for your support during our annual Bloomin' Birdathon. More than 30 participants combined their love of birds and wildflowers into significant financial support - we raised \$28,727! Over 225 Bloomin' Birdathon sponsors and 189 Eggstravaganza participants helped to exceed our goal!

Special thanks to this year's top Bloomin' Birdathon fundraisers:

- Stephanie Mason & Pam Oves - \$6,813
- Team Cottingham - \$5,670
- Marcia Minichiello - \$5,268
- ANS Board of Directors Team - \$2,712
- Stephen & Liz Jones - \$1,737
- No Carbon Footprint Team: Neal Fitzpatrick & John Bjerke - \$1,684

Three participants had more than 100 bird species sightings with **Marcia Minichiello** being our top birder and bloomer, identifying 133 bird species and 74 blooms.

Thank you to all Bloomin' Birdathon participants: Dottie Beck, Shelia Cochran, Drewry Cromwell, Paul & Gabriel D'Andrea, Cecily Nabors & Diane Ford, Eileen Nivera & Rhonda Kranz, Lisa Norwalk & Leonard Bisson, Nicholas Schliapin, Loree Trilling, Eric & Nancy Voit, and Jacky Wershale.

As you know, the Bloomin' Birdathon is one of our biggest fundraising events of the year. Your generous support helps to fund Audubon Naturalist Society's (ANS) local conservation and environmental education programs throughout the year. Thank you so much to all participants and their generous sponsors. Look for details on the 37th Annual Bloomin' Birdathon in March 2017.

### MEMORIAL AND TRIBUTE CONTRIBUTIONS May-July 2016

**In memory of Laura Elizabeth Adamson-Daly-Myklebust**  
Susan Hamburg, Ronald Schwartz, Alex & Joshua Schwartz

**In memory of Gilbert Ebner**  
Elizabeth Ridings

**In memory of Dan Nicolson**  
Joel Brown & Julie Strauss; Barbara Guttman & Steve Zwart;  
Linda Keenan & Peter Day

**In honor of Jacky Wershale**  
Susan Pollack

## IN REMEMBRANCE

**Anthony White**, a past President of the Audubon Naturalist Society, died on May 31 in Boulder, CO where he had lived for several years. Tony was an outstanding birder and a great birding mentor. He was an early force promoting and leading the trips that became the Extended Travel Program. He guided ANS through a difficult period and helped preserve its character as an independent Audubon. He also served as President of the Maryland Ornithological Society.

Tony had a career in the Navy as an intelligence officer, served as the Executive Officer on naval bases in Scotland and Alaska, and was fluent in Mandarin Chinese, Japanese, and Russian. In retirement he became a leading authority on the birds of the West Indies. He and his wife Katherine (Trina), who predeceased him, had a winter home in the Bahamas. He had the largest life list of bird species for the Caribbean for many years.

He will be remembered with deep fondness for his warmth, his wit, and his curiosity. He was a delightful traveling companion, the perfect person to stroll with on the C&O Canal or to share a cold pre-dawn morning on a Prairie Chicken lek in Kansas.

---

**Jack Schultz**, a former Board member and tireless volunteer for Audubon Naturalist Society, passed away on August 4. Our deepest condolences go out to Jack's wife, Helen, and all of his family.

Jack had a long career as the Membership Manager for the U.S. Chamber of Commerce and brought much of his professional expertise to his Board leadership of ANS from 1995-2000 and through his other leadership positions with ANS over many years.

Jack's energy and enthusiasm lifted any ANS event with which he volunteered: from the Holiday and Nature Fairs to organizing bird walks, educational activities and helping out with administrative work at Woodend. Jack's warm and jovial personality enabled him to connect instantly with anyone and he was a marvelous ambassador for ANS promoting our programs and work widely in the community.

After he retired, Jack (an excellent birder) and Helen became keen Nature Travelers with ANS and had the amazing fortune of a rare sighting of Right Whales on a recent trip to Nova Scotia. Jack took every opportunity to be out in the field as his interest in the natural world spanned multiple topics.

Larger than life, Jack's infectious laughter always preceded him by several seconds. Jack, you went too soon and will be sorely missed by all of us at ANS.

---

ANS is sad to say goodbye to **Mike Springer**, a paddler and C&O canal bike patrol, who became a Master Naturalist in 2015. Our heartfelt condolences to the family of this man who loved life and the natural world.

---

Our heartfelt condolences to the family of **Zoe Lefkowitz** who was a long time member and Naturalist Shop volunteer. Zoe passed away in July.

ANS lost another friend in August, when area butterfly expert and field trip leader **Dick Smith** passed away unexpectedly on a family vacation in Idaho. We were lucky to be at the receiving end of Dick's talents for more than 20 years. Thanks to Dick, ANS members explored butterfly habitats throughout our region, from the Eastern Shore to the National Arboretum to Hoyle's Mill Conservation Area.

Unassuming about his expertise, Dick entertained the most basic questions with patience. He was happy to engage with beginners and advanced alike, and he was as eager to learn from others as he was to dispense information. Dick wasn't afraid to say "I don't know," showing that even experts can get stumped by those pesky skippers!

Thanks, Dick, for opening our eyes and enriching our lives.

## REGISTRATION INFORMATION

Education programs are held at Woodend, the Audubon Naturalist Society's 40-acre Headquarters, 8940 Jones Mill Road, Chevy Chase, MD 20815, unless otherwise noted. All education programs except Nature Travel have online registration. You may also register in person in the EE office Monday-Friday, 9 a.m.-4 p.m. You will be notified immediately if the program is full; otherwise, confirmation letters will be emailed 1-2 weeks before the scheduled program.

Lectures are held at our Woodend Sanctuary, and field trip transportation is by private vehicle or carpool unless otherwise noted. Most programs are limited to 16 participants and also have a minimum enrollment, so early registration is important to ensure that programs run. Unless otherwise noted, weekend adult foray program fees do not include meals or lodging.

Because our programs rely on registration fees for funding, we have adopted this policy:

- Cancellations must be made at least six working days before the beginning of the program to be eligible for a credit to your account, less a \$5 administrative fee.
- If an adult foray is cancelled by ANS due to low enrollment, you will receive a full refund. If a weather-related concern or another issue outside of ANS's control forces a cancellation, you will receive a full credit to your account.
- Nature travel programs have different cancellation policies, explained on the information sheet sent on request.

ANS is committed to addressing problems when they occur. Program participants are encouraged to bring problems or concerns of any kind directly to the staff member in charge of the program. Staff members will try to resolve the problem immediately or as soon as reasonably possible. If staff is unable to do so, they are expected to bring the problem to the attention of their immediate supervisor or member of the Senior Management Team, who will take responsibility for seeking a resolution. Program participants are welcome to bring unresolved problems or concerns to the attention of the Executive Director. The Executive Director's decision on resolution of the problem is final.

# ANS ANNUAL MEETING Woodend Master Plan Debut

Thursday, October 20, 6-9 p.m.

Woodend Sanctuary

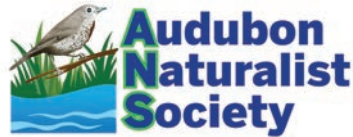
Please join us for our Annual Meeting, featuring the unveiling of the visionary Woodend Master Plan.

The evening event will include recognition of volunteers and Natural History Field Studies graduates, and election of members to the ANS Board. Windows Catering Company will provide a light supper.

RSVP to this free event by October 17 by contacting Carol Hayes (carol.hayes@anshome.org or 301-652-9188 x10). Friends and family are welcome, too.

## BOARD ELECTIONS:

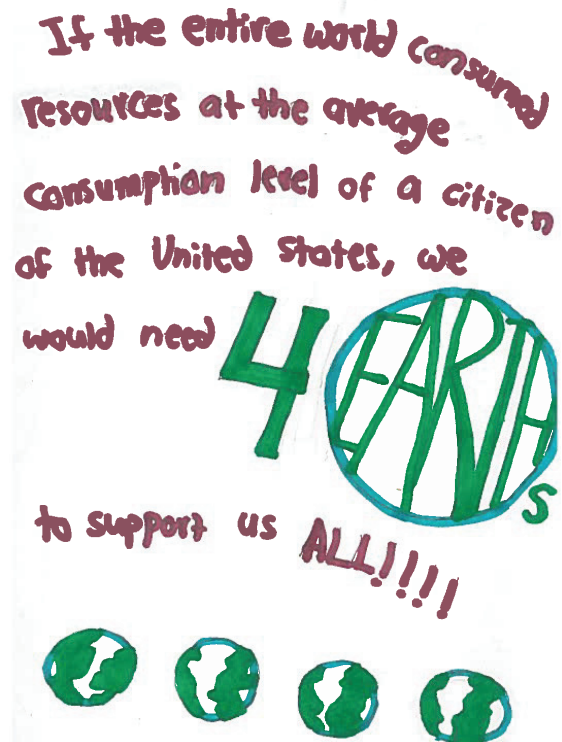
Members will vote on candidates for the Board of Directors at the Annual Meeting. An official notice including profiles of the Board candidates nominated by the Governance Committee will be posted at [www.ANShome.org/board](http://www.ANShome.org/board) after October 1.



8940 Jones Mill Road  
Chevy Chase, MD 20815

Non-profit org.  
AUTO  
U.S. postage  
PAID  
Suburban, MD  
Permit No. 3385

Proudly printed on 30% post-consumer waste paper.  
Please recycle this paper.



"Green Team" summer campers investigated local environmental policy issues such as energy use and educated ANS staff with signs such as these, which were hung on the walls of Woodend Mansion for the last week of camp.